

# MIDTOWNMUSE

*Living in Midtown*



## in this issue:

Moving to Midtown	1
Phoenix Urban Life	1
More Scenes from Midtown	2-3
Musing on Central	4
Palms Theatre	5
Community Calendar	6-7
Block Watch - Traffic Safety Tips	7
How Do I Get Out of Jury Duty?	8
Car Batteries and Water Bottles	9
Cerified Local Fall Fest	10
President's Message	10
ASU Osher Lifelong Learning Center	11

OCT  
NOV  
DEC

2012



[www.midtownmuseumdistrict.org](http://www.midtownmuseumdistrict.org)



## Welcome to Midtown

Midtown provides many living choices. We have high-rises, mid-rises, low-rises and single family homes – all amid tall office buildings, museums, theatres and restaurants.

In this issue the **MUSE** celebrates living in Midtown Phoenix, so we asked some of our residents to share their reasons for choosing an urban address. Susan and Brien Thompson moved to Midtown from the Valley's West side. Yvette Beaulieu-Kreutzberg and Kipp Kreutzberg have lived in the US and abroad and came to Midtown by way of North Scottsdale. Each enjoys the spice of life along Central Avenue.

Dan Carroll highlights some of the great drinking and dining spots in Midtown. Our first mixer in May was a great success on the Skydeck at the Clarendon. Our second mixer at the end of August at Filmbar introduced many of our residents to a great, unique venue. Join us for our next mixer on Wednesday October 24<sup>th</sup> at Sochu House, the latest addition to Central Avenue in Midtown.

Reminisce with Kate Herbert and Paul Estes on happenings and places on Central awhile ago. Check out the Community Calendar for the current happenings and places. And catch our car, legal, learning and traffic tips.

### The Board:

Dan Carroll, President  
Susan Thompson, Vice President  
Jason Mazanek, Secretary  
Paul Estes, Treasurer  
Margaret Dietrich, Member at Large

### Board Support:

Mike Oleskow, President Emeritus  
Julia Tourville, Project Coordinator  
Kate Herbert, Project Coordinator

For information about us: [www.midtownMUSEumdistrict.org](http://www.midtownMUSEumdistrict.org) or call 602-758-3129 or like us on Facebook.

Please support the advertisers that make the MUSE possible.

Midtown photographs by Brien Thompson.

### Advertise in the Midtown MUSE

1,350 printed copies – 550 emailed

Contact us at 602-758-3129 or  
[info@midtownmuseumdistrict.org](mailto:info@midtownmuseumdistrict.org)

*We appreciate our advertisers who make the Midtown MUSE possible.*

Cash  
Incentives  
Available!

# Easy Money



With the money you save  
on your utility bill, you can  
buy the things you want.



Find out how.

Visit [www.energizephx.com](http://www.energizephx.com)  
or call 602-495-5275.

Save Money by Saving Energy!





### Moving to Midtown

By Susan Thompson

"You are moving where...into what?" "But you work in Glendale?" "Where will you buy groceries?"

These were some of the many questions I had to answer when I announced that my husband Brien and I had purchased a 960 square foot home built eighty years

ago in midtown Phoenix. To true "burb-ites" it is hard to fathom leaving the urban sprawl with its easy access to big box stores and constant chain food fare. It can be daunting for someone unfamiliar to navigate one-way streets.

Twenty-two years ago, after college, "midtown" lured me for this simple reason: the neighborhoods had mature trees and homes with porches surrounded by high-rises. I longed to be anywhere other than the desert; to be surrounded by greenescapes and neighborhoods where everyone knew your name. But I didn't have the courage and settled in safe Peoria. Yet, my heart yearned for more.

A decade plus later, I had learned to love the Arizona landscape, the powerful seasonal quality of desert blooms and the richness of green found in succulents and Palo Verdes. In addition, I entrenched myself in the valley's theatre community and the sports season ticket holders. I had an affair. *My Florist* drew me away from the safety of Olive Garden and Applebee's. A colleague lived in Ashland Place. His little Spanish bungalow wooed me; his painstakingly designed desert yard rivaled the Desert Botanical Garden. I could only covet...a sin, yes, but a sin filled with sincere love and admiration.

The experience with his home put me over the top. I became obsessed with finding a home in midtown. Thirty homes in forty days, none of them plausible. Then, as if Cecil B. Demille was writing the script, my colleague offered his home to me to purchase before he listed it on the market. He was moving out of state and wanted his passion to be with someone he knew would love it. The home, the neighborhood, and the lifestyle of culture, cuisine and community I had longed for had just landed at my feet. Amazing how life-changes pop up when you least expect them.

Moving to Midtown had been the best choice I have ever made and getting to serve MMDNA solidifies all I ever wanted those twenty two years ago: to be on my porch where we all know each other's name.

### Phoenix Urban Life

By Yvette Beaulieu-Kreutzberg and Kipp Kreutzberg

We met in 1984, studying international business in Geneva, Switzerland. The Hotel Beau Site was our makeshift dorm, with its old fashioned cage elevator. Out the front door, the Number 12 trolley rattled and rang all the way from

Carouge. Just around the corner was the Grand Opera House, where we went on our first date, on January 23, 1984. Luciano Pavarotti was the lead tenor in the Masked Ball.



Thirty years later, we find ourselves living in midtown Phoenix at the Chateau on Central, a brownstone development at the corner of Palm Lane and Central Avenue, where the old world charm meets new world luxury and comfort. The light rail runs quietly past our front door, a great way to get to and from the airport for our itinerant work lives. Within a block are the Phoenix Art Museum, live theatre and Native American history at the Heard Museum. In 2013, the Arizona Opera will open its new rehearsal hall. We chose living at the Chateau because of its proximity to Brophy, where our fourth child is just starting his freshman year.

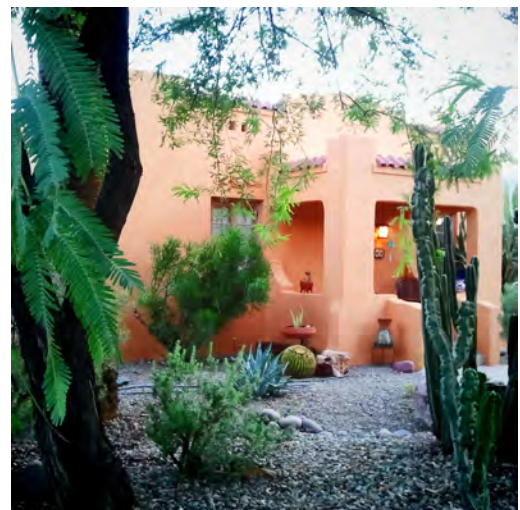
With a blended family of five kids, the Chateau provides the space and versatility to host our entire brood. The vertical living space, with its vaulted ceilings, is thoughtfully designed across five floors. With two portico porches and a roof terrace, there is ample room to entertain. An indoor elevator conveniently supplements stairs, particularly when groceries are loaded in. We walk to church and to great restaurants. The Saturday Farmers' Market is a short bike ride away.

PERFECT MARTINIS • GREAT STEAKS  
FRESH FLORIDA STONE CRAB  
HEAVENLY DESSERTS

2611 North Central Avenue, Phoenix, Arizona 85004  
Phone (602) 264-5967 Fax (602) 264-5112  
[www.durantsaz.com](http://www.durantsaz.com)



# More Scenes of Living in Midtown...





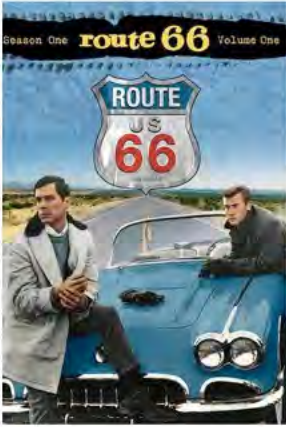


Councilman Michael Nowakowski at a Midtown Museum District Association meeting.



## Musing on Central Avenue

By Paul W. Estes



Recently, while driving north on Central Avenue from downtown, I was struck with how radically the skyline on Central Avenue has changed since my family first moved to Phoenix in the mid-fifties. The tallest buildings in those days were the Westward Ho Hotel at Fillmore and the YMCA on 1<sup>st</sup> Avenue north of Van Buren. Date palm and citrus orchards reigned north of Camelback Road.

The first commercial "high rise" building on Central Avenue north of McDowell Road was the Guarantee Bank building built in 1960 on the southwest corner of Central Avenue and Columbus. The exterior color was turquoise (reflective glass exteriors had not come to Phoenix yet). The building created quite a stir as a "business" high rise that far north of downtown.

The construction site helped put Phoenix on the map when it was used for an episode of the old "Route 66" television series. In the second season, Tod Stiles (Martin Milner) and Buz Murdock (George Maharis) portrayed construction workers on the building. We saw and heard much about the filming, and eagerly watched the episode called "You Never Had It So Good." The episode aired February 23, 1962.

On March 2, 1962, another Phoenix episode aired: "Shoulder the Sky, My Lad" where Tod and Buz are working as punch press operators. In 1963, another episode was filmed in Apache Junction, which was becoming an Arizona center for the film and TV industry. That episode, which aired on February 22, 1963, was called "...Shall Forfeit His Dog and Ten Shillings to the King." In it, Tod (now working alone, as Milner had left the series) is working in Apache Junction at a dog racing track.

Because of the spectacular scenery in Arizona, we have enjoyed a rich history of film and television exposure. The former Guarantee Bank building still stands, but it is no longer turquoise. It is now brown and beige and has a multi-pointed roof. Alexi's restaurant is located on the ground floor. Now, some 50 years later, Midtown is completely different; it has grown up both in attitude and in its physical aspects. But, if you look hard enough, you can still see the beginnings of its rich heritage.



**Holiday Inn**  
Phoenix  
Downtown North

212 W. Osborn Road - Phoenix, AZ 85013  
Phone: 602-595-4444  
[www.HolidayInn.com/phx-downtown](http://www.HolidayInn.com/phx-downtown)

#### AMENITIES

- 136 rooms & suites
- Restaurant & lounge
- Business center
- Fitness center
- Pool & spa
- Free Internet access
- Priority Club Rewards
- Special group rates
- One block from Light Rail

You've heard the **name**.  
You've seen the **sign**.  
You've always been **curious**.

IT'S TIME TO EXPERIENCE



**DUCK and  
DECANTER**

*Serving award  
winning sandwiches,  
soups & salads...*

*since 1972*

**Proud supporter of the Midtown  
Museum District Neighborhood**

**3111 N Central Ave (602) 234-3656**  
1651 E Camelback (602) 274-5429  
1 N Central Ave (602) 266-6637  
[www.duckanddecanter.com](http://www.duckanddecanter.com)



## PALMS THEATRE

By Katherine "Kate" Herbert

Downtown Phoenix was close to being included in the 100-largest-cities list during the waning days of World War II but it was still small enough that downtown was where most people went for entertainment, to work and to shop. The city, though, was creeping north on Central Avenue; to Paramount Nace Pictures, it seemed like the right time to add to their chain of theaters.

Their project wasn't to be any ordinary theater as the downtown houses: the Strand, the Rialto, and the Vista. Nor was it to fill a city block like the Orpheum or the Fox, both built in a time when theaters were ornate cinema cathedrals.

The new theater edging the suburbs would reflect a sleek Mid-Century design to be created by Lescher & Mahoney, with the aid of consulting architect William Pereira. Taking a cue from Frank Lloyd Wright's work, the building also planned to incorporate organic elements by using local materials such as flagstone. The land was purchased, construction begun, and on March 23, 1945 the Palms Theatre opened its doors at 2612 N. Central, just north of Virginia. There was no doubt more fanfare for the building's style than for the film chosen to be projected. It's one almost no one remembers despite its star: a famous blonde.

The glass enclosed lobby was unlike any theater in the Valley. A reflecting pool extended from the outside entry to the inside lobby (running under the glass wall) where posters of coming attractions hung. On their way to the single-level, 772-seat auditorium, patrons would pass



from the lobby to a living room-like seating area where walls featured artwork and nooks displayed Native American pots. According to an item posted at the website Cinema Treasures (written by a former Palms assistant manager), soft lighting, fresh flowers, and piped-in-music set the mood while an attendant kept the area neat and clean. Popcorn was prepared and bagged downstairs to keep the odor from permeating the space. Inside the auditorium, state-of-the-art fixtures and equipment made the movie experience complete.

Filmgoers could enjoy the contemporary elegance of the Palms while they watched such Academy Award winning epics such as "Bridge on the River Kwai" and "Lawrence of Arabia." But as Phoenix spread from 17.1 square miles in 1950 to 324 in 1980, the Palms lost out to its suburban counterparts and closed in 1981. Unlike many cities, no one in Phoenix succeeded in rescuing it (as also happened to the Fox Theatre) and it was soon razed and replaced by an office building. Oh, and the film that premiered at opening night? "Bring on the Girls," a comedy starring Veronica Lake and Eddie Bracken. Yeah, almost no one remembers it.

∞ IT SHOULDN'T BE WEIRD IF ∞

It's 11PM.

You have a weird sore throat.

You leave a message with your Dr.'s answering service.

The Dr. actually calls you BACK at 11:15PM.



**Dr. Griffin Cipolla**

*Your Family Doctor In The Neighborhood.*

*120 E. Monterey Way, Just South of Osborn & Central*

*602-266-4383    www.PhxDoc.Com*



# COMMUNITYCALENDAR

## Arts & Culture

### Arizona Humanities Council

602-257-0335 [www.azhumanities.org](http://www.azhumanities.org)  
11/3 Arizona Humanities Festival: American Jukebox  
at Civic Space Park 10:00-4:00  
Programs and events nearby and around the state

### Arizona Opera at Symphony Hall

602-266-7464 [www.azopera.org](http://www.azopera.org)  
10/12-14 Lucia di Lammermoor  
11/16-18 Romeo et Juliette

### Arizona Theatre Company at the Herberger

602-256-6995 [www.arizonatheatre.org](http://www.arizonatheatre.org)  
10/11-28 Next to Normal  
11/15-12/2 Lombardi

### Black Theater Troupe at Playhouse in the Park

602-254-2151 [www.blacktheatretroupe.org](http://www.blacktheatretroupe.org)  
10/12-21 Two Trains Running  
12/7-16 Such a Time As This

### Burton Barr Public Library - 1221 N Central Ave

602-534-5208 [www.plfriends.org](http://www.plfriends.org)  
602-262-4636 [www.phoenixpubliclibrary.org](http://www.phoenixpubliclibrary.org)  
10/22-11/3 Stories of Our Lives exhibit  
10/27 10:00-2:00 Free Family Literacy Festival in Hance Park  
10/27-28 Book sale at Friends Warehouse 1330 N 29th Dr

### Cutler-Plotkin Jewish Heritage Center - 122 E Culver

602-241-7870 [www.azjhs.org](http://www.azjhs.org)  
10/21 2:00 Front Row Center: Broadway Show Tunes  
Genealogy classes, films and book discussions

### George Washington Carver Museum - 415 E Grant St

602-254-7516 [www.gcwuseumculturalcenter.org](http://www.gcwuseumculturalcenter.org)  
til 12/7 Environmental Memories of South Central Phoenix

### Great AZ Puppet Theater - 302 W Latham

602-262-2050 [www.azpuppets.org](http://www.azpuppets.org)  
10/3-31 Little Bunny's Halloween  
10/5-6 Adult Puppet Slam  
11/1-11 The Little Red Hen  
11/13-18 Imagine This  
11/21-12/2 The Little Red Hen  
12/5-23 The Leprechaun and the Reindeer  
12/26-1/13 Cinderella

### Heard Museum - 2301 N Central Ave

602-252-8840 [www.heard.org](http://www.heard.org)  
11/14 5:00 American Indian Veterans National Memorial  
dedication ceremony and exhibit opening  
Free guided tours with admission

### Irish Cultural Center - 1106 N Central Ave

602-258-0109 [www.azirish.org](http://www.azirish.org)  
10/27 10:00am-10:00pm Autumn Celebration  
Classes, dances and special events

### Japanese Friendship Garden 1125 N 3rd Ave

602-256-3204 [www.japanesefriendshipgarden.org](http://www.japanesefriendshipgarden.org)  
10/2 Opening Day

### Phoenix Art Museum - Central and McDowell

602-257-1222 [www.phxart.org](http://www.phxart.org)  
Multitude of films, talks and exhibits

### Phoenix Center for the Arts - 1202 N 3rd St

602-254-3100 [www.phoenixcenterforthearts.org](http://www.phoenixcenterforthearts.org)  
10/4-8 Dennis Brady Workshop  
Many forms of art classes for children and adults

### Phoenix Metropolitan Men's Chorus

602-228-5587 [www.gcpaphx.org](http://www.gcpaphx.org)  
12/14-16 Fire & Ice: Sing Down the Stars, John Paul Theatre

### Phoenix Symphony

602-495-1999 [www.phoenixsymphony.org](http://www.phoenixsymphony.org)  
Fall season is full of great performances

### Phoenix Theatre - 100 E McDowell

602-254-2151 [www.phoenixtheatre.com](http://www.phoenixtheatre.com)  
until 10/14 Spamalot  
10/31-11/25 Defending the Caveman

### Phoenix Trolley Museum - 25 W Culver St

[www.phoenixtrolley.com](http://www.phoenixtrolley.com)

### Rosie's House

602-252-8475 [www.rosieshouse.org](http://www.rosieshouse.org)  
10/13 2nd Annual Charity Poker Tournament  
11/13 A Night of Mariachi

## MMDNA Events

602-758-3129 [www.midtownmuseumdistrict.org](http://www.midtownmuseumdistrict.org)  
10/2 6:00 Meeting/discussion at Chevront's  
10/24 6:00 Mixer at Sochu House, 2801 N Central

## Events in the Area

### First Fridays and Third Fridays every month

[www.artlinkphoenix.com](http://www.artlinkphoenix.com)

**Hance Park** north of Roosevelt between 3rd St & 3rd Ave  
Enjoy 32 acres of green space and many great events

### 10/5-6 Phoenix Oktoberfest, Hance Park

[www.phoenixoktoberfest.com](http://www.phoenixoktoberfest.com)

### 10/20 11:00am-8:00pm Grand Avenue Festival

[www.grandavephoenix.com](http://www.grandavephoenix.com)

### 11/3 Evans-Churchill Interesting Interiors Tour

10:00-4:00 Roosevelt & 5th Street

### 11/3 Roosevelt Row Pie Social & Croquet Tournament

2:00-6:00 Roosevelt & 2nd Street

[www.rooseveltrow.org](http://www.rooseveltrow.org)

### 11/4 37th Annual 3TV Phoenix 10K & Half Marathon

Start: City Scape Plaza, north on Central, returns on Central  
[www.phx10k.com](http://www.phx10k.com)

### 11/10 10am-4pm Historic Roosevelt TourFest

3rd Ave & Portland St [www.rooseveltneighborhood.org](http://www.rooseveltneighborhood.org)

### 11/10 Local First 8th Annual Certified Local Fall Festival

10am-4pm Portland Parkway between Central & 3rd Ave  
[www.localfirstaz.com](http://www.localfirstaz.com)

## Nightlife/Happy Hours

**Alexi's Grill** - Happy Hour M-F 3-7pm - 3550 N Central Ave

602-279-0982 [www.alexisgrillphx.com](http://www.alexisgrillphx.com)

**Fez** - Daily Happy Hour - 3815 N Central Ave

602-279-0982 [www.fezoncentral.com](http://www.fezoncentral.com)

**Chevront's** - M-F Happy Hour - 1326 N Central Ave

602-307-0022 [www.chevronts.com](http://www.chevronts.com)

(continued on next page)



# COMMUNITYCALENDAR

**Clarendon Hotel Skydeck** - 401 W Clarendon Ave  
602-252-7363 [www.theclarendon.net/roof](http://www.theclarendon.net/roof)

**Club Central** - R&B and Hip Hop - Park Central  
602-200-8121 [www.clubcentralphx.com](http://www.clubcentralphx.com)

**Kobalt** - Daily events - Park Central  
602-264-5307 [www.kobaltbarphoenix.com](http://www.kobaltbarphoenix.com)

**Macayo's** - Happy Hour M-F 4-7pm - 4001 N Central Ave  
602-264-6141 [www.macayo.com](http://www.macayo.com)

**Sochu House** - Happy Hour M-F 3-6pm & 10:30-1am  
2801 N Central 602-340-9777 [www.sochuhouse.com](http://www.sochuhouse.com)

**Switch** - Daily Happy Hour 4-6:30 - 2603 N Central Ave  
602-264-2295 [www.switchofarizona.com](http://www.switchofarizona.com)



**North Kenilworth Veterinary Care**  
*Knowledgeable, compassionate care you can trust*

## NOW OPEN!

Serving Midtown and Downtown Phoenix  
with all of your veterinary needs

Located in the historic medical building at  
**342 W McDowell Rd**  
Northeast corner of 5<sup>th</sup> Ave and McDowell

602-374-3091  
[www.northkenilworthvet.com](http://www.northkenilworthvet.com)  
M-F 7:00 am - 5:00 pm  
Sat 8:00 am - Noon



## TRAFFIC SAFETY TIPS



### EMERGENCY VEHICLES

Whenever a police car, fire engine, ambulance or other emergency vehicle approaches using a siren, lights or other warning devices, you must yield the right of-way.

- ❖ Drive at once to the right side of the road
- ❖ Stop until the vehicle has passed.

### THE "MOVE OVER" LAW

In late 2005, a new law went into effect referred to as the "Move Over" law (ARS §28-775E-1-2). The law was drafted as a result of the increase in the number of injuries and fatalities to those working to protect the public - police officers and emergency personnel. The "Move Over Law" gets its name from the idea of having drivers safely merge to an adjacent lane on highways with two or more lanes proceeding in the same direction when police or emergency personnel are stopped near or on the road. The law recognizes that sometimes it is not possible or the second lane just does not exist to move over. Those situations call for reduced speeds and proceeding with extreme caution. Having the safety margin protects police officers and emergency personnel and reduces your risk of causing a deadly collision.

The "Move Over" law requires that a motorist move to the LEFT and slow down when approaching a police officer with a stopped vehicle. The scene could involve a traffic violator pulled over by police, a crash or vehicle breakdown. This law mainly targets freeways and other multilane highways, but also applies to city streets where a driver is expected to slow down and move to the left.

### FOLLOWING EMERGENCY VEHICLES

The driver of a vehicle, other than one on official business, shall not follow any fire apparatus traveling in response to a fire closer than 500 feet, or drive into or park their vehicle within the block where the fire apparatus has stopped to answer a fire alarm. When a police vehicle with flashing lights and giving an audible signal approaches, a driver shall move to the right. The driver shall maintain a distance of at least 300 feet behind any police vehicle in an emergency.

*pizza. salads. pasta. sandwiches.*



**\$5 OFF**  
**YOUR ORDER OF**  
**\$25 OR MORE**



midtown phoenix  
53 w. thomas rd.  
(602) 234-3289



downtown phoenix  
111. w. monroe st.  
602.254.4145



order  
online at  
[zpizza.com](http://zpizza.com)

**zpizza**  
the pure one™



## How Do I Get Out of Jury Duty?

by Robert Campos

You received your summons to appear for jury duty, but you want out; you have better things to do with your time; you cannot miss work; you have restless leg syndrome and cannot sit still for any period of time. How do you get out of service?

Our Constitution guarantees us the right to trial by our fellow citizens sitting in judgment of our conduct. Jury duty is therefore one of the most important duties we have as a citizen of this country. Without qualified jurors, the system would come to a complete stop.

There are, however, certain requirements: you must be a citizen of the United States; a resident in the jurisdiction summoned to serve; you must not have a felony conviction and not had your civil rights restored; and you must not be adjudicated mentally incompetent or insane. A.R.S Section 21-201.

If you meet the requirements, you may be excused under certain situations: if you have a mental or physical condition that makes you incapable of jury service (but you must have a doctor's statement and this statement must be in writing and provided to the court ahead of time); if your service would materially affect the public interest or welfare in an adverse manner; if you are not capable of understanding English; or if jury service would cause you undue or extreme physical or financial hardship. A.R.S. Section 21-202.

In other words, it is difficult to get out of service without a really good reason. Judges hear excuses every day and have little patience for bogus reasons why you cannot be a juror.

If you "willfully and without reasonable excuse" fail to attend service, the judge may issue what is called a "body attachment" and have you picked up by a deputy sheriff. You may be fined up to five hundred dollars and be required to serve another day. A.R.S. Section 21-223.

You do not want this to happen to you, but more importantly, you should be *honored* to do your duty and serve as a juror.

There may come a time when you, a friend, or a loved one are facing criminal charges and claim to be innocent or you may be involved in a serious traffic accident and sue for your injuries. Someone may post a defamatory lie or picture on Facebook and you might wish to sue for the pain this has caused you. You would want intelligent and caring citizens to listen to your case and make a sound decision. You will want justice. Therefore, next time you get that summons, consider yourself fortunate to be able

## The Best Cleaners

29 W Thomas Road  
Phoenix 85013-4418  
602-253-5312

*Specializing in wedding gowns,  
leather, down comforters*

## Executive Towers Barber Shop



Reg. Haircut \$15 Razor Cuts \$18  
Flat Tops \$15 Shampoos \$ 3  
And many more!

Appointments and Walk-ins Welcome  
\$5 off First Time Customers

207 W Clarendon Phoenix, AZ 85013 602-265-6975

coffee. ice cream. breakfast. wraps....

**DELIVERED!**

**\$2 OFF  
YOUR ORDER OF  
\$10 OR MORE**

**pinkspot**

pinkspotcoffeeandicecream.com  
monday - friday 7am -10pm  
sat + sun 8am -10pm

midtown phoenix  
49 w. thomas rd.  
(602) 265-3889





# Robert J. Campos & Associates, P.L.C.

We defend ALL criminal charges

Phone: (602) 222-3440

Email: [info@robertjcampos.com](mailto:info@robertjcampos.com)

[www.robertjcampos.com](http://www.robertjcampos.com)



**Certified Criminal Law Specialist, Former Prosecutor & Former City Court Judge**

## Car Batteries & Water Bottles

By Roger Cahill



For most of us living here in the Southwest replacing our battery every few years is just the norm. For many of us, having a pair of jumper cables in the trunk is reassurance that we will be prepared if our battery dies.

However, there is a concern when jump starting any vehicle that everyone should

know. Sulfuric acid and water in the battery can escape through battery vents and damaged seams, especially as the battery ages. The battery surface becomes sulfated, which leads to less

electrolyte and more hydrogen gas on the top of the battery. Hydrogen gas is extremely flammable. When jumper cables are connected to the battery, they can produce a spark if not attached properly (*first positive to positive, then negative to negative or grounded to the chassis*). Most people are unaware of the possibility of fire. **Here is a tip:** next time you jump start the battery, pour some water over the top of it **FIRST**. This will neutralize any gases that are just waiting for an ignition source.

**TOYOWEST**  
AUTOMOTIVE, INC.

3831 N. CENTRAL  
PHOENIX, AZ 85012  
602.274.3600  
[TOYOWEST.com](http://TOYOWEST.com)

LEXUS TOYOTA  
CAR CARE SPECIALISTS

DEBBIE & ROGER CAHILL

**Pizza Doesn't Have to Be Ordinary!**

*Hob Nobs*

Sandwiches • Pizzas • Salads  
Dessert • Espresso • 40 Unique Beers  
Boutique Wine & Spirits  
Art Gallery • Live Music

149 W. McDowell Rd • 602.253.9220  
[Hob-Nobs.com](http://Hob-Nobs.com) • Additional Parking Across 3rd Ave

New Times  
**BEST OF PHOENIX WINNER**

House of Shave  
**Barber Parlor**

Enjoy the luxury of having your own personal barber

Matthew A. Gallegos  
your servant

---

OPEN  
Monday - Thursday  
1 pm - 7 pm  
1st Ave & McDowell  
(602) 258-1224

(Parking in Rear, Cash Only)



# Michael Santeusanio

ABR, GRI, GREEN, SFR



Living, Working,  
and Playing in  
Central Phoenix

Professional  
Ethical  
Experienced

Serving residential Real  
Estate needs in Phoenix  
Area since 2002

**(602) 317-7077**

Michael.Santeusanio@azmoves.com

Coldwellbanker.com/  
Michael.Santeusanio



RESIDENTIAL BROKERAGE

Providing exceptional real estate in  
the USA since 1906



## President's Message

By Dan Carroll

Musing about a midtown meal? Lusting for some luscious libations? Our community has wonderful chain restaurants that we all know and rely on. We also have outstanding independent local eateries and we urge you to make them a part of your dining and drinking routine.

Many of us enjoyed dinner and drinks at Gallo Blanco following our recent mixer at the Clarendon Hotel. Midtown also has the oldest private dining club in Phoenix: the University Club. In the mood for a top-rated burger and drinks? Drop by Fez, whose burger was named one of the top five by the *Arizona Republic*. Perhaps you joined us over the holidays when we hosted a meeting at Switch. They are a terrific newer addition to the midtown block that is home to the legendary Durant's. And just a little further up on Central, let's welcome our newest neighbor, Sochu House, where chef Jonny Chu, of Fate and SENS fame, has recently opened his neo Asian restaurant and martini bar.

Any culinary quest in the Midtown Museum District would be incomplete without dropping by Palette at the Phoenix Art Museum or the Courtyard Cafe at the Heard Museum. Coffee doesn't get much better than at Giant. When your sweet tooth demands attention, stop by the Pink Spot on Thomas.

We love Chevront's, Hob Nob's and so many others that I'm certain to have missed. Friend us on Facebook and share some of your Midtown favorites, too.



**What:** The 8th Annual Certified Local Fall Festival will be a day to celebrate Arizona in an **ALL-NEW LOCATION!**

This family-friendly street festival will showcase over 60 of Arizona's best locally owned businesses. Over 5,000 Arizonans came out last year to share in the local celebration! Entertainment is provided by Arizona's favorite musicians while participating restaurants provide samples from their menu and Arizona's breweries and wineries provide tastings in the Beer & Wine Garden. A raffle and silent auction raise funds for Local First and the first 500 attendees receive gift bags stuffed with cool local schwag.

**When:** Saturday, November 10, 2012. Begins at 10 a.m. and ends at 4 p.m.

**Where:** Portland Parkway, on Portland Street between Third and Central Avenues, Downtown Phoenix, one block north of Roosevelt Row and at the Roosevelt Light Rail stop. Local First Arizona finally outgrew the Duck & Decanter, their trusted home for the past 7 years!

# Qualtire



Plumbing & Construction, A.C.C.

**(602) 246-0656**

www.qualtire.com

3518 W. Bethany Home Rd.  
Phoenix, Arizona 85019  
(602) 973-2922 Fax

PLUMBING

CONSTRUCTION

REMODELING

ELECTRICAL

*Your full service company since 1964*

Lic #'s ROC033789 • ROC083887 • ROC067990 • ROC083903 • ROC212090

Mention this ad and receive 10% off your next repair.

### ALL PLUMBING SERVICE & REPAIR

Faucets \* Disposals \* Water Heaters  
Repipe Water, Sewer and Gas Lines  
Sewer and Drain Cleaning

### SPECIALIZING IN CUSTOM KITCHEN & BATH REMODELS

Room Additions \* Planning & Design Service  
Home Improvements \* Painting \* Tile - Cabinets  
Counters \* Flooring \* Roofing

### ELECTRICAL

Professional Electrical Service  
Repairs & Panel Upgrades



**ASU: Why Should I Continue to Learn?**

Research world-wide has proven that exercising the brain is an important factor in delaying and often preventing dementia, depression and other age related conditions. That is why the Barnard Osher Foundation supports more than 115 university-affiliated Osher Institutes nationwide. ASU is proud to be one of those institutes working to provide a diverse repertoire of intellectually stimulating non-credit short courses and lectures for 50+ adults in five locations citywide.

This fall Osher Lifelong Learning Institute (OLLI) at ASU Foundation is pleased to announce the opening its new Downtown campus program. Residents of the Phoenix inner city area are invited to become part of this new ASU community by attending courses designed specifically for the 50+ generation and take advantage of the many member group discounts to local cultural and art events. All courses are taught by gifted faculty, in the fields of history, art, health, and current world events and are offered at a nominal cost. In addition to many member benefits, the OLLI at ASU has formed partnerships with the Phoenix Art Museum, Childsplay and the MIM, offering exclusive courses to OLLI members.

For more information call **602-543-6440** or [lifelonglearning@asu.edu](mailto:lifelonglearning@asu.edu).

*Just Around the Corner*  
Professional Pet Sitting & Home Services



**Theresa Smith**  
**(602) 301-1373**

[justaroundthecorner@cox.net](mailto:justaroundthecorner@cox.net)

[www.jatcpetsit.com](http://www.jatcpetsit.com)

Bonded & Insured  

**Paul J. Gleason, PT**  
Principal

**Physical Therapy Complete**  
*Experience you can trust!*

[PaulGleason@PTComplete.com](mailto:PaulGleason@PTComplete.com)

**Physical Therapy Complete, PLLC**  
375 E. Virginia Avenue, Suite B  
Phoenix, AZ 85004-1220  
Phone 602 264-5323  
Fax 602 264-5302

*Sports Injury,  
Industrial & Orthopedic  
Rehabilitation*

[www.PTComplete.com](http://www.PTComplete.com)

**HARRY'S**  
FINE JEWELRY

**Doug DeChance**

Fine Watches & Service

**We Buy  
Gold**

**2323 N. Central Ave.**

(Foyer of the Regency House)

**602.252.5262**

Directly Across The Street

**Burn Fat. Not Gas.**

Sports Club  
at

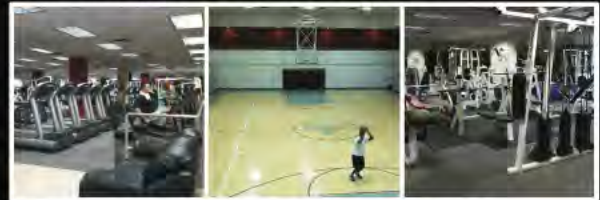
**CITY SQUARE**

- Yoga, Zumba, Nia, and Boot Camp
- Premium weight training and cardio equipment
- A clean, pleasant atmosphere
- Limited Membership (1,200 members, age 18+)
- Full court indoor basketball court
- Six racquetball courts
- Members only outdoor pool
- Massage Therapy
- Staff Trainers
- Free Parking

**Special Offer for New Members\***

**\$99 for 3 months**

*\*Limited to first-time guests, 18 or over, with valid AZ driver's license*



4000 North Central Avenue, Suite 110  
(602) 285-2929 • [www.sportsclubatcitysquare.com](http://www.sportsclubatcitysquare.com)



# ELEVATE YOUR SERVICE!

*Rossmar's high-rise experience in the Phoenix Metro area surpasses the competition!*

*Robert S. - High Rise Board Member, Tempe AZ*



## Rossmar & Graham

Community Association Management

*go ahead, give us a call!* 1.855.222.2102 [rossmar.com](http://rossmar.com)

# HIGH RISE DIVISION

- Annual Reports
- Banners
- Book Printing
- Brochures
- Business Cards
- CD & DVD
- Replication
- Carbonless Forms
- Cards & Invitations
- Catalogs
- Copies
- Fliers
- Labels
- Legal Document
- Copying
- Letterhead & Envelopes
- Letterpress
- Manuals
- Newsletters
- Postcards
- Pasters & Signs
- Presentation Materials
- Promotional Items
- Restaurant Menus
- Training & Education
- Materials

# Be Direct

*Targeted Marketing!*

### Hit your target with agDirect Marketing!

Using our array of direct marketing solutions, we can help you communicate with customers and prospects in their language, to get results. See how you can put our multi-channel approach and personalized campaigns to work for you. Ask us about agDirect Marketing today.



## NEW FACEBOOK FRIENDS OFFER

"Like" us on Facebook and get  
3¢ BW Copies  
or  
15¢ Color Copies  
on your first order!



[www.facebook.com/alphagraphicscentralavenue](http://www.facebook.com/alphagraphicscentralavenue)

Central Avenue  
**alphagraphics**<sup>®</sup>  
increase your reach

### Call for easy FREE Pick-up and Delivery!

3525 North Central Avenue | Phoenix, Arizona 85012  
Phone 602.274.2345 | Fax 602.274.2836  
[www.us006.alphagraphics.com](http://www.us006.alphagraphics.com)

Offer valid until 12.31.12. One coupon per client. Some restrictions apply.



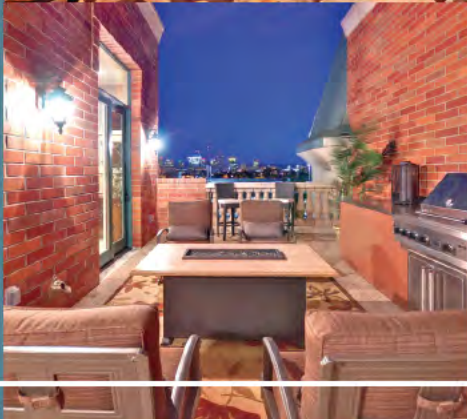
URBAN phoenix



CHATEAU  
ON CENTRAL

Balancing  
work and play

ON SO MANY  
LEVELS.



**ONLY 21 LUXURY  
5 STORY BROWNSTONES  
OFFERING LIVE-WORK ZONING**

**CENTRAL AND PALM LANE  
VIBRANT DOWNTOWN LOCATION**

**personal elevator • private roof-top patios  
2-car garage • gated and secure  
from 5,200 square feet**

**ATTRACTIVELY PRICED FROM \$1.1 MILLION  
LOCATED ALONG THE LIGHT RAIL**

**MODEL TOURS AVAILABLE  
CALL 602.258.1817**

**ExtraordinaryUrban.com**

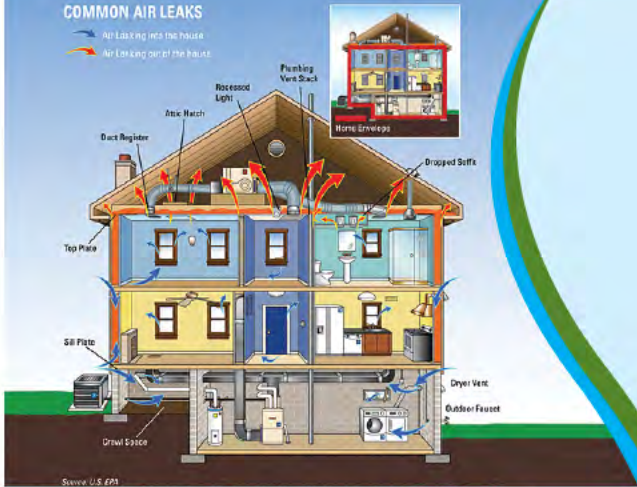
Sales by Cambridge Properties Inc. Keith Mishkin, broker, licensed in the State of Arizona. Square footage is approximate and may vary. This material is not an offer to sell real property and shall not be construed as an offer in violation of the law of any jurisdiction. No Federal or State agency has judged the merits or value if any, of this property. Obtain all relevant documents, disclaimers, and covenants, and read them before signing anything. The depictions herein may reflect building, amenities and improvements some or all of which may be conceptual only, and subject to change without notice. All brokers welcome. Prices, terms, incentives, material, and availability subject to change without notice. Subject to Public Report. © 2012 All rights reserved.





**COMMON AIR LEAKS**

- Air Leaking into the house
- Air Leaking out of the house



Source: U.S. EPA



**REDUCE  
BEFORE YOU  
PRODUCE**

SKY Renewable Energy is proud to be an Energize Phoenix "Approved Contractor" & an APS Solutions for Business Trade Ally.



ROC# 249209

# SKY Renewable Energy

Learn how SKY Renewable Energy can help you **reduce** your current utility bills, **maximize** your monthly savings, and **leverage** your "hard earned" dollars through the "Energize Phoenix" energy optimization rebate program.

**Call or email us today to set up an Energy Audit for your home or office at:**

**602-507-4790**

**info@skyrenewableenergy.com**

**skyrenewableenergy.com**

SKY Construction & Engineering Inc. dba SKY Renewable Energy







where the experts are™

*“Recognized.  
Respected.  
Recommended.”*

# Nicholas Yale.com

(480) 620-8075 • nicholasyale.com  
4700 N. Central Ave Suite 205 • Phoenix, AZ 85012