

# MIDTOWNMUSE

*Midtown is Green!*



## in this issue:

Sunday <i>Off Central</i>	Inside Cover, 8
The Last Mile	1
Hance Park Moves Forward	3
Friends of Hance Dog Park	3
Community Calendar	4
40 X 20	5
Be Safe and Save Your Green	6
Traveling Green This Summer	6
Save MOney - Live Green	6
Guns in Our Community	7
Shocks & Struts: What Do They Really Do?	7
Association of Arizona Food Banks	8
2828 North Central	9

JUL  
AUG  
SEP

2013



MUSEUM DISTRICT NEIGHBORHOOD ASSOCIATION

[www.midtownmuseumdistrict.org](http://www.midtownmuseumdistrict.org)

Like Us on Facebook!

## Welcome to Midtown

The amazingly lush and green tree on our cover is at Central and Osborn across from the Light Rail stop. Sometimes it is filled with a cacophony of bird songs. This issue covers many aspects of green in Midtown, which is much more than tall buildings. In addition, we have the adaptive reuse of the 2828 N Central Building at Central and Thomas; the history of Hance Park – The Last Mile – and all that is going on there now; plus tips on saving your green, as well as our regular Midtown features.

### City Council District 4 Election – August 27<sup>th</sup>

We are excited about the coming election of our representative to the City Council. Tom Simplot has done a superb job over the last six years and we will greatly miss his voice. There are six contenders for the seat, one of whom is our own MMDNA President, Dan Carroll, who has ably guided the association over the past 18 months. We wish him success and ask for your support.



### Midtown Urban Living Condo Tour – November 2<sup>nd</sup>

Our first annual Urban Living tour will be on Saturday afternoon, November 2<sup>nd</sup>, from 3:00-7:00pm to show off Midtown and our City at dusk. The theme is “Live, Work and Play in Midtown.” We expect to have ten to twelve stunning condos on the tour as well as two office buildings and a couple of other interesting places along Central. If you want to help with the planning please contact us at [susan.mmdna@gmail.com](mailto:susan.mmdna@gmail.com) or 602-318-7683. There will be opportunities for business sponsorship. On the day of the event we will need about 100 volunteers. So come out and enjoy your neighborhood and welcome our guests.

### Cover photo by Brien Thompson

#### The MMDNA Board:

Dan Carroll, President  
Susan Thompson, Vice-president  
Jason Mazanek, Secretary  
Paul Estes, Treasurer  
Margaret Dietrich, Member at large  
With Mike Oleskow, Julia Tourville and Louise Roman

For information about us or to advertise in the MUSE contact us at: [info@midtownMUSEumdistrict.org](mailto:info@midtownMUSEumdistrict.org) or 602-758-3129 or go to Facebook and *like* us.

See page 8 for additional photos of the Block Party!



**Stop By For YOUR Complimentary Sample  
Relaxation Station Session  
VibeFit Body Shaper Session  
Integrated Energy Therapy® Session**

**Healing for Your Body, Mind, Soul and Business**

**Nurture, Transform, Clarify, Relax, Connect, Learn**

Reiki • Intuitive Counseling • Classes • Energy Healing • IET®  
Medical Hypnoanalysis • Weight Management • Holistic Marketing

**Healing Energies Center**

2 West Vernon Avenue • Phoenix, AZ 85003  
602-374-8501 • [PhoenixHealingEnergiesCenter.com](http://PhoenixHealingEnergiesCenter.com)

**Classroom Space Available For Rent Too!**

## Sunday Off Central - March 10, 2013

Our first annual Block Party, sponsored by our Block Watch Grant, was a huge success. The neighbors on East Vernon welcomed over 250 visitors, a food court, 42 vendors and non-profits. Our Community Action Officer Ben Harris strolled the block and visited with everyone. The North Park Central Phoenix Neighborhood Patrol (PNP) provided unobtrusive security. We thank everyone who participated and look forward to seeing you next year. These pictures will tell the story better than words:



## The Last Mile

By Donna Reiner, PhD

When plans began for the design of the last mile of Interstate 10, which stretches from Santa Monica, California to



Jacksonville, Florida, no one could have imagined that it would take so long to come to fruition or, once the plans were finalized and construction began, that the costs, budget constraints, and the usual delays associated with a large project would ultimately change much of the proposed landscape.

In 1972, grand plans for the “Central Avenue Park” were approved. The lushly landscaped park would include bike paths, a living museum located at the Ellis-Shackelford House, recreational facilities, and a visitor center. On paper, this would be a park where Phoenicians and visitors would gather for fun, recreation, and festivals. However, a dark cloud hovered over this proposal when the freeway design failed to be approved. Of course, the land had been purchased and cleared of houses, leaving what looked like a dead zone right through the middle of residential Phoenix.

In 1984, a new plan proposed that the park be situated on top of an underground portion of the freeway. This new design concept intended to turn a dead zone into a “major unifying element” for the surrounding neighborhoods and central Phoenix. The plans again proposed recreation and open space, but this time included an exhibit area for arts and crafts, a sculpture garden, water features, tree bosque, amphitheatre, and an active recreation area. The park was meant to re-establish a cohesive community that had been ripped apart by the removal of hundreds of homes.

The city created an advisory committee in 1985 to move the project forward and they presented a draft master plan to city council in March 1986.

The deck park concept still had more hoops to jump through before finally opening. Much larger than similar parks in Seattle and Washington, DC, it was being billed as the “playground of Phoenix.” A Japanese Tea Garden and then an Irish farmhouse to celebrate two of Phoenix’s sister cities were suggested. The city even proposed placing the new central main library in the park. Ideas continued to swirl around while the actual construction of the underground portion of I-10 finally began in the fall of 1988. Newspaper articles announced that the proposed opening of the tunnel and the park would be in early 1990.

Of course things don’t always go according to schedule. Work on the park finally started in January 1991, but budget constraints reduced the amenities. The fountains and amphitheatre were not built and construction of the Irish farmhouse and the Japanese Tea Garden were postponed. The three original sections of this park design: cultural, urban plaza (around Central Avenue) and neighborhood (west side) are not something most visitors or Phoenicians could even grasp today. While the library was constructed on the edge of the deck near the urban plaza, the other sections are distinct by contour of the land. The Japanese Tea Garden is cultural, but it is on the west end of the park and the Irish Cultural Center is on the southern side of what was to be the urban plaza. The Phoenix Center for the Arts, a marvelous cultural center, is a bookend on the east end of the park.

So after twenty years, the Margaret T. Hance Park was dedicated on Saturday, April 25, 1992 and The Last Mile of I-10 was completed.

# “THE PART-TIME NURSE PRACTITIONER WILL SEE YOU NOW” DOESN'T QUITE HAVE THE SAME RING

When you're a client at Camelback Mountain Medical Associates, you always see your doctor. Plus, your doctor is on-call 24/7, so even in off-hour emergencies, you can get the quality healthcare you deserve. Find out more at [www.PhxDoc.com](http://www.PhxDoc.com).

**Dr. Griffin Cipolla**

*Your Family Doctor In The Neighborhood, Just South of Osborn & Central*  
120 E. Monterey Way 602-266-4383 [www.PhxDoc.Com](http://www.PhxDoc.Com)

You've heard the **name**.  
 You've seen the **sign**.  
 You've always been **curious**.  
**IT'S TIME TO EXPERIENCE**



*Serving award winning sandwiches, soups & salads...*



**Proud supporter of the Midtown Museum District Neighborhood**

**3111 N Central Ave (602) 234-3656**  
 1651 E Camelback (602) 274-5429  
 1 N Central Ave (602) 266-6637  
[www.duckanddecanter.com](http://www.duckanddecanter.com)



**Holiday Inn**  
 Phoenix  
 Downtown North

212 W. Osborn Road - Phoenix, AZ 85013  
 Phone: 602-595-4444  
[www.HolidayInn.com/phx-downtown](http://www.HolidayInn.com/phx-downtown)

**AMENITIES**

- 136 rooms & suites
- Restaurant & lounge
- Business center
- Fitness center
- Pool & spa
- Free Internet access
- Priority Club Rewards
- Special group rates
- One block from Light Rail

- Annual Reports
- Banners
- Book Printing
- Brochures
- Business Cards
- CD & DVD Replication
- Carbonless Forms
- Cards & Invitations
- Catalogs
- Copies
- Fliers
- Labels
- Legal Document Copying
- Letterhead & Envelopes
- Letterpress
- Manuals
- Newsletters
- Postcards
- Posters & Signs
- Presentation Materials
- Promotional Items
- Restaurant Menus
- Training & Education Materials

# Summer Special Offer..

"Like" us on Facebook and receive



# YOUR NEXT ORDER



[www.facebook.com/alphagraphicscentralavenue](http://www.facebook.com/alphagraphicscentralavenue)

Offer valid until 09.28.13. One coupon per client. New clients only. Some restrictions apply.



Central Avenue  
**alphagraphics**

increase your reach  
**Call for easy FREE Pick-up and Delivery!**

3525 North Central Avenue | Phoenix, Arizona 85012  
 Phone 602.274.2345 | Fax 602.274.2836  
[www.us006.alphagraphics.com](http://www.us006.alphagraphics.com)

## Friends of the Hance Dog Park

by Martin Vogel

The City of Phoenix is constructing a new downtown dog park, with separate sections for large and small dogs, in Hance Park between 3<sup>rd</sup> and 5<sup>th</sup> Avenues south of Culver Street. Construction started May 28 and is expected to be completed by the end of July. The opening will be delayed until early September to give the grass a chance to root.

Friends of Hance Dog Park, a group of downtown dog lovers, organized under the auspices of the Phoenix Parks Foundation, is excited to have a beautiful, safe place for our canine friends to run and play. In an effort to support the development and immediate enjoyment of the dog park, Friends have raised \$5,000 to "supersize" the nine trees in the City's plan. These larger trees will provide immediate shade when the park first opens. Additional funds will be raised to purchase other amenities: shade sails, benches and picnic tables.

Join Friends in supporting the construction of the new Hance Dog Park by making your contribution today. Checks may be made payable to the "Phoenix Parks Foundation" with a note in the memo field: "Friends of Hance Dog Park". (*This should create a tax-deductible contribution.*) Checks may be mailed to Friends of Hance Dog Park, c/o 940 W Palm Lane, Phoenix 85007. *Please note that the Phoenix Parks Foundation, as fiscal agent, will provide donation receipts for tax purposes in January.*

## Executive Towers Barber Shop



Reg. Haircut \$15 Razor Cuts \$18

Flat Tops \$15 Shampoos \$ 3

And many more!

Appointments and Walk-ins Welcome

*\$5 off First Time Customers*

207 W Clarendon Phoenix, AZ 85013 602-265-6975

## The Best Cleaners

29 W Thomas Road  
Phoenix 85013-4418  
602-253-5312

*Specializing in wedding gowns,  
leather, down comforters  
and alterations*

## Hance Park Moves Forward Again

By Louise Roman

It took 20 years for Hance Park to arrive at its dedication in April 1992. Now, a little over 20 years later, again through private and public efforts, Hance Park is poised on another evolutionary threshold.

Hance Park has been particularly challenged during the recent economic downturn. Responding to the advocacy work of neighboring stakeholders, the City of Phoenix Parks and Recreation Department refocused on the park in 2011 by appointing the Hance Park Master Plan Steering Committee. While the Committee's work identified key desirable park features and programming opportunities, their primary recommendation was a City lead RFQ (*Request for Qualifications*) process to attract a first class design team to complete an inspiring and phase-able direction for reinvigorating Hance Park. This was approved in joint vote of the Parks and Recreation Board and the City Council Parks Subcommittee in the spring of 2012.

The Parks Department issued the Hance Park Master Plan RFQ in late December of 2012. Twenty teams responded. A City appointed evaluation panel of 13 design professionals, civic leaders, and City representatives reviewed all the portfolios before selecting four teams for interview. After extensive deliberation the evaluation panel recommended one team for City approval and contract. On March 28th that recommendation was approved.

The selected design team is comprised of local, national and international talents: Imelk/Jerry Van Eyck will be the lead designer/master planner, Weddle Gilmore will operate as the prime consultant and Floor Associates will be the local landscape architect. Other members of the team include HR&A, ETM Associates, City Activators Inc, Rider Levett Bucknall, Pentagram, Kimber Lanning, Public Workshop, David Evans Assoc, Buro Happold, IAS Labs, Artistic Arborist and RAMM.

The contract has been signed and the team will formally begin to produce the new master plan on July 1, 2013. They will conduct extensive research and outreach, culling knowledge, experience, big and small ideas and desired program elements from all corners: the physical park and its all important parent, ADOT; the immediate cultural, civic, business stakeholders; and the context of the residential community and larger city that surrounds it.

The Hance Park master plan will give focus to this urban imperative and serve as a framework and catalyst for ongoing public and private partnership efforts in Hance Park and the surrounding urban fabric.

Great cities have great parks, and great parks make great cities!

# COMMUNITYCALENDAR

MIDTOWNMUSE jul/aug/sep 2013

## Arts & Culture

**Arizona Humanities Council**  
602-257-0335 [www.azhumanities.org](http://www.azhumanities.org)  
Programs and events nearby and around the state

**Arizona Opera at Symphony Hall**  
602-266-7464 [www.azopera.org](http://www.azopera.org)  
10/11- 13 HMS Pinafore

**Arizona Theatre Company** at the Herberger  
602-256-6995 [www.arizonatheatre.org](http://www.arizonatheatre.org)  
10/10-27 The Importance of Being Ernest

**Burton Barr Public Library** - 1221 N Central Ave  
602-534-5208 [www.plfriends.org](http://www.plfriends.org)  
602-262-4636 [www.phoenixpubliclibrary.org](http://www.phoenixpubliclibrary.org)  
check out the e-books  
Programs for Toddlers through Seniors

**Cutler-Plotkin Jewish Heritage Center** - 122 E Culver  
602-241-7870 [www.azjhs.org](http://www.azjhs.org)  
Exhibit: Jewish Pioneers in the Arizona Territory  
Genealogy classes, films and book discussions

**Great AZ Puppet Theater** - 302 W Latham  
602-262-2050 [www.azpuppets.org](http://www.azpuppets.org)  
7/10-28 The Monkey & The Pirate  
7/31-8/3 Old Macdonald  
8/14-9/8 The Princess, the Unicorn & the Smelly Foot Troll  
9/11-22 Jeremy Jackrabbit Recycles the Can  
9/25-10/6 Baby Bear Goes to School

**Hance Park** north of Roosevelt between 3rd St & 3rd Ave  
Enjoy 32 acres of green space and many great events

**Heard Museum** - 2301 N Central Ave  
602-252-8840 [www.heard.org](http://www.heard.org)  
Summer pass: \$25 Single, \$50 Family (4) until 9/2  
Active Military and family - Free until 9/2

**Irish Cultural Center** - 1106 N Central Ave  
602-258-0109 [www.azirish.org](http://www.azirish.org)  
Classes, dances and special events

**Japanese Friendship Garden** - 1125 N 3rd Ave  
602-256-3204 [www.japanesefriendshipgarden.org](http://www.japanesefriendshipgarden.org)  
Closed for the summer. Reopens 10/1

**MusicaNova Orchestra**  
480-585-4485  
[www.musicanovaaz.com](http://www.musicanovaaz.com)  
10/27 Youthful Variations

**Phoenix Art Museum** - Central and McDowell  
602-257-1222 [www.phxart.org](http://www.phxart.org)  
The Art of Video Games until 9/29  
[www.taovg.org](http://www.taovg.org) to play  
Multitude of films, talks and exhibits

**Phoenix Center for the Arts** - 1202 N 3rd St  
602-254-3100 [www.phoenixcenterforthearts.org](http://www.phoenixcenterforthearts.org)  
Many forms of art classes for children and adults

**Phoenix Theatre** - 100 E. McDowell  
602-254-2151

[www.phoenixtheatre.com](http://www.phoenixtheatre.com)  
8/21-9/15 - Rent  
9/12-10/13 Ruthless! The Musical  
10/2-20 The 39 Steps

**Rosie's House**  
602-252-8475  
[www.rosieshouse.org](http://www.rosieshouse.org)  
7/18 6:00 p.m. Annual Bowling Shoot-Out  
Register by July 12

## Sports and Events

**Freedom Wireless Fabulous Phoenix Fourth**  
Festivities kick off at 6 pm, July 4th Steele Indian School Park  
3rd Street & Indian School Road  
Fireworks begin at approx. 9:30 pm  
602-534-FEST or visit <http://phoenix.gov/parks/fabphx4.html>

**Arizona Diamondbacks Baseball**  
602-462-6500  
[www.arizonadiamondbacks.mlb.com](http://www.arizonadiamondbacks.mlb.com)

**First Fridays and Third Fridays every month**  
[www.artlinkphoenix.com](http://www.artlinkphoenix.com)

**Hance Park**  
north of Roosevelt between 3rd Street and 3rd Avenue  
Enjoy 32 acres of green space

## Nightlife/Happy Hours

**Alexi's Grill** - Happy Hour M-F 3-7pm - 3550 N Central Ave  
602-279-0982 [www.alexisgrillphx.com](http://www.alexisgrillphx.com)

**Fez** - Daily Happy Hour - 3815 N Central Ave  
602-279-0982 [www.fezoncentral.com](http://www.fezoncentral.com)

**Clarendon Hotel Skydeck** - 401 W Clarendon Ave  
602-252-7363 [www.theclarendon.net/roof](http://www.theclarendon.net/roof)

**Kobalt** - Daily events - Park Central  
602-264-5307 [www.kobaltbarphoenix.com](http://www.kobaltbarphoenix.com)

**Macayo's** - Happy Hour M-F 4-7pm - 4001 N Central Ave  
602-264-6141 [www.macayo.com](http://www.macayo.com)

**Switch** - Daily Happy Hour 4-6:30 - 2603 N Central Ave  
602-264-2295 [www.switchofarizona.com](http://www.switchofarizona.com)

*pizza. salads. pasta. sandwiches.*



**\$5 OFF  
YOUR ORDER OF  
\$25 OR MORE**



midtown phoenix  
53 w. thomas rd.  
(602) 234-3289



downtown phoenix  
111. w. monroe st.  
602.254.4145



order  
online at  
[pizza.com](http://pizza.com)

**z pizza**  
the pure one™

## 40 by 20

By Mayor Greg Stanton

As you take out your trash this week, think about this: Phoenix families, businesses and industries generate enough solid waste to fill Chase Field to the top, 14 times each year. *14 times!* And much of what we throw away is recyclable, reusable and valuable.

Our future as a thriving city depends on how well we protect our natural resources and environment; increase the efficiencies of our operations; think in a creative, entrepreneurial, and innovative manner and create new economic opportunities. Part of that is integrating more recycling and sustainability into our daily lives. Phoenix's future depends on it.

That's why at my State of the City address, I announced the launch of "40 by 20" — a new plan from the Phoenix Public Works Department to divert 40 percent of all waste from landfills by the year 2020.

"40 by 20" will more than triple our diversion rate, dramatically increasing what we recycle and transforming how we all think about trash and useful discarded items.

The point is to make sustainability easy—toss your grass and tree clippings into a curbside pickup bin, check a mobile app to drop off your hazardous waste and schedule bulk trash pick up at your convenience.

It's also good for your pocket book. Reducing your trash could cut your trash bill by paying less for a smaller bin, which in turn saves us all money without the need for more landfills. I think you'll like what "40 by 20" will do:

### Education, Choice and Opportunity

- Providing more education about recycling and composting through partnerships with businesses and schools
- Using incentives for residents and businesses that minimize their waste production and maximize their recycling efforts
- Expanding service for multifamily, commercial and industrial groups to participate in recycling and diversion programs.

### Change the Conversation

- Creating jobs and new business opportunities for companies that can recover materials and recycle solid waste.
- Developing a Center of Excellence—bringing industry and academic partners to find new solutions and uses for solid waste
- Partnering with Arizona State University's Global Institute on Sustainability to advance solid waste research

### Protect our Assets

- Recycling and diverting more of our waste will protect our natural environment in Phoenix and keep our neighborhoods clean.
- Increasing cost savings by extending the life span of our current landfills and delaying future investments funded by city residents.
- Investing in opportunities that will create and expand private sector jobs/economies around turning "trash/recyclables" into useful items for local and regional markets.

Yes, we're setting the bar high, but we can't move ahead if we don't lay out our path for success. It will take all of us to achieve our goal of "40 by 20."

### The Heard Museum - Did You Know?

- The Heard Museum opened on the grounds of Dwight and Maie Heard's Casa Blanca estate on Central Avenue in 1929. It sought to "educate the public about the heritage and living cultures and arts of Native peoples, with emphasis on the peoples of the Southwest" with displays of art and artifacts.
- Maie Heard donated the land at the northeast corner of Central and McDowell for the Phoenix Art Museum, the Phoenix Theatre and a central library.

Once again the Heard Museum is offering its famous Summer Passes. For \$25 (\$50 for a family of four) you'll receive unlimited admission to the Heard Museum between June 1 and Sept. 2! Plus, holders of the Summer Pass get the same discounts as a museum member! This includes a 10% discount in the Museum Shops (excluding already *reduced and consignment* items). *These privileges are NOT transferable.*

coffee. ice cream. breakfast. wraps....

**DELIVERED!**



[pinkspotcoffeeandicecream.com](http://pinkspotcoffeeandicecream.com)  
monday - friday 7am - 10pm  
sat + sun 8am - 10pm

midtown phoenix  
49 w. thomas rd.  
(602) 265-3889

**Pink Spot**

## Be Safe and Save Your “Green”

Tips on Preventing Identity Theft From Your Recycling

Most of us are recycling more of our waste and that’s great for the environment. But, did you know that Arizona has one of the highest rates of identity theft in the nation? Criminals use many tricks to get your personal information. Are you certain that the person that you see going through trash to take aluminum cans is not a criminal looking for information about you?

When you put your papers out for recycling, don’t forget to remove or obliterate your name and address. Shred all documents that contain personal identifying information. Shred credit card solicitations or credit card checks. Shred all of your business papers and bank statements, ideally using a cross-cut shredder. If you don’t have access to a shredder, you can take your documents for free secure shredding at specific KeepPhoenix Beautiful events, or to Shred-A-Thons organized by the County Attorney’s office. See: [www.keepphxbeautiful.org](http://www.keepphxbeautiful.org) or [www.maricopacountyattorney.org](http://www.maricopacountyattorney.org)

You can also reduce the amount of unwanted mail by removing your name from direct mail lists.

Send your name, address and telephone number to:  
DMA Mail Preference Service  
P.O. Box 643

Carmel, NY 10512

For more information on things you can do to protect yourself against Identity Theft go to [www.crimefreeaz.com](http://www.crimefreeaz.com) or visit the Phoenix Police [www.phoenix.gov/police/id\\_theft](http://www.phoenix.gov/police/id_theft) or the Maricopa County Attorney’s Office web site at [www.maricopacountyattorney.org](http://www.maricopacountyattorney.org)

If you are a business owner, there is information about protecting your business. Contact Detective Mark Potts, who runs the Phoenix Police “safebiz” program, 602-534-9960 or [mark.potts@phoenix.gov](mailto:mark.potts@phoenix.gov)

Finally, don’t forget, “dumpster diving” is a crime and the motives of the person going through your trash may not be as innocent as you think. Call Crimestop 602-262-6151 and report suspicious behavior.

***This article was funded by a Block Watch Grant provided by the City of Phoenix.***

***Block Watch is a program to detect, deter and prevent crime.***

## Traveling Green This Summer

By Tishin Donkersley, M.A., *Elements Communication*

Whether taking a stay-cation or going somewhere cooler, take your green travel habits with you and help protect the Earth along the way.

- When booking a hotel, research if the property engages in green practices and if the restaurant uses locally-sourced food.
- If you are vacationing in Arizona, visit the Arizona Hotel and Lodging Association sites [www.azhla.com](http://www.azhla.com) & [www.stayinaz.com](http://www.stayinaz.com) to search for “Certified Green” lodging.
- Try public transportation. You’ll save money and reduce your carbon footprint. More importantly, if you are in a walkable city, get out your sneakers and go! It’s healthy and you’d be amazed at what you see on foot!
- Calculate your carbon footprint by visiting [www.carbonfund.org](http://www.carbonfund.org) or [www.epa.gov](http://www.epa.gov).
- Bring reusable coffee mugs, water bottles and shopping bags for the road.
- Visit local festivals or farmers markets
- Eat Locally. Yelp, UrbanSpoon and Zagat are great resources to help you find those locations and they have a free downloadable app.
- Remember to reuse towels, recycle, minimize the shower time and turn off the lights.

## Save Money - Live Green

By Tishin Donkersley, M.A., *Elements Communication*

Conserving energy is just one aspect of living green. With triple-digit temperatures in full swing, we all can relate to higher energy bills and need to find ways to save on energy and cash. Here are some tips to reduce the vampire power and sneaky leaks that are causing your energy bill to increase.

- Install a programmable thermostat to reduce usage when you are away-even better, turn up your thermostat even five degrees when you are at work and save money
- Hot air can find a way in to your home so make sure your ducts, doors, windows and external electrical outlets are sealed
- To improve airflow and reduce the stress on appliances and the air conditioning unit, change out your air filters and clean out the dust bunnies from behind the drier, refrigerator and ceiling air vents
- Switch over electronics to a powerstrip and turn the powerstrip off when not in use
- Switch out the incandescent bulbs to energy-saving bulbs to reduce heat generation and reduce energy use by 75 percent
- Wash with cold water as it can take up to 80 percent of your energy to heat the water



## Guns in Our Community – Working Together to Find Solutions

By Dan Carroll

On Wednesday, March 6<sup>th</sup>, we were privileged to host what we hope will be the first in a periodic series of community dialogues. The topic of our inaugural event was gun violence and ways for the community to come together to find solutions. In the wake of tragic events in Connecticut as well as close to home we felt it wise to take a look back at successful local efforts to stem the tide of irresponsible gun use.



We were fortunate to have a distinguished panel of guest including Mr. Joe Clure, President of the Phoenix Law Enforcement Association (PLEA); Mr. Jim Dunn, Executive Director of the Arizona Chapter of the National Alliance on the Mentally Ill; former Phoenix Mayor Phil Gordon; former Maricopa County Attorney Richard Romley; and Mr. Benny White, Esq. representing a pro-second amendment philosophy.

The forum presented a comprehensive overview of the work it took to pass Shannon's Law about a decade ago. The law brought groups and individuals of divergent philosophies together to work as one toward a solution. This can act as a template for future efforts. All involved agreed that a big piece of the puzzle is tackling mental health challenges while preserving individual rights. Audience participation was impassioned and we look forward to continuing the conversation.

## Shocks & Struts: What Do They Really Do?

By Roger Cahill



Shocks and struts have many duties and most believe their only function is to provide a comfortable ride. Contrary to belief, shocks and struts primary function are to keep the tire firmly planted to the road surface. By doing so they control vehicle stability,

such as weight transfer during braking and acceleration, body-roll during cornering, and lane changes - all while providing a comfortable ride.



As shocks and struts wear, drivers adapt to the slow degrading changes that occur. Over time these subtle degrading changes affect driver stability and steering ride, as well as other suspension and steering components.

### Why less control?

Worn shocks & struts allow unwanted tire movement as the available tread contact on the pavement decreases. If the tire isn't gripping the road well you will lose traction. Cornering, accelerating and stopping distance become a problem. Additionally, when you add wet or slippery conditions...well you can imagine the trouble the driver can have.

### Why more wear?

Everything works together in steering & suspension. The extra impact and movement at each attached part causes accelerated deterioration or wear. One worn part causes another... and another... and so on.

Shocks and struts are a safety component. Have your struts and shocks inspected if you are experiencing any of these conditions.

For more information visit <http://www.kyb.com/>

**Pizza Doesn't Have to Be Ordinary!**

# Hob Nobs

Sandwiches • Pizzas • Salads  
Dessert • Espresso • 40 Unique Beers  
Boutique Wine & Spirits  
Art Gallery • Live Music

149 W. McDowell Rd • 602.253.9220  
Hob-Nobs.com • Additional Parking Across 3rd Ave

**TOYOWEST**  
AUTOMOTIVE, INC.

3831 N. CENTRAL  
PHOENIX, AZ 85012  
602.274.3600  
TOYOWEST.com

LEXUS TOYOTA  
CAR CARE SPECIALISTS

DEBBIE & ROGER CAHILL

# Sports Club at CITY-SQUARE

Your Uptown Fitness Experience!

- Yoga, Zumba, Nia, and Pilates
- Premium weight training and cardio equipment
- A clean, pleasant atmosphere
- Limited Membership (900 members, age 18+)
- Indoor Basketball/Volleyball Court
- Six racquetball courts
- Members only outdoor pool
- Massage Therapy
- Staff Trainers
- Free Parking

**Special Offer for New Members\***  
**\$99 for 3 months**

\*Limited to first-time guests, 18 or over, with valid photo I.D.



4000 North Central Avenue, Suite 110 • Phoenix, AZ  
(602) 285-2929 • [www.sportsclubatcitysquare.com](http://www.sportsclubatcitysquare.com)

## Just Around the Corner

Professional Pet Sitting & Home Services



**Theresa Smith**  
**(602) 301-1373**

[justaroundthecorner@cox.net](mailto:justaroundthecorner@cox.net)

[www.jatcpetsit.com](http://www.jatcpetsit.com)

Bonded & Insured  

## Association of Arizona Food Banks

By Brian Simpson

Established in 1984, the Association of Arizona Food Banks (AAFB) is a small non-profit organization serving five regional food bank members

(Community Food Bank of Southern Arizona, Desert Mission Food Bank, St. Mary's Food Bank Alliance, United Food Bank and Yuma Community

Food Bank), who collectively serve a network of nearly 1,600 food pantries and agencies throughout all 15 Arizona counties. Since the recession hit, our member food banks are distributing more than 11 million pounds of food and over 100,000 emergency food boxes each month. The need truly is great at the moment.



AAFB is primarily focused on developing new food resources, advocating for public policy changes at the local, state and federal levels to help people struggling with hunger and poverty, fostering collaboration amongst food banks, networking with local, state and national leaders dedicated to ending hunger, and engaging society in hunger awareness and sensitivity. As one of the first state food bank associations in the nation, AAFB developed and operates the Arizona Statewide Gleaning Project, which helps transport millions of pounds of donated fresh produce and other product to food banks each year.

In Midtown Phoenix, Cultural Cup Food Bank on Osborn just west of 7<sup>th</sup> Street is our local food pantry, and it is a tremendous asset to our neighborhood. If you need of food assistance, are looking for a place to donate, or want to volunteer some of your time, Cultural Cup would be happy to hear from you.

Learn more about AAFB and Arizona's food banks at [www.azfoodbanks.org](http://www.azfoodbanks.org) or find us on Facebook and Twitter.



More Block Party photos to enjoy!

## 2828 N Central Avenue | Boutique Office Coming Soon

By Jennifer Lowe

In May of 2012 Bob Karber and Tim O'Neil acquired the building known as One Thomas at the southwest corner of Central Avenue and Thomas Road.

Bob and Tim's first order of business was rebranding the lifeless building to what we now call **2828 N Central**.



With forward thinking design, the architectural expertise of architect DJ Fernandes, and Stark James construction, building renovations are in full swing. The building's facelift will include new exterior patio space opening on to Central Avenue, new lobbies and updated elevator cabs and common areas throughout.

The focus of the building's remodel is a modern but welcoming boutique feel to attract locals, pedestrians and Valley METRO light rail commuters looking to escape for some local coffee, food or drinks. The vision is to offer something unique and inspirational for Midtown area office tenants and residents and its proving to be the right move. 2828 N Central recently secured its first new tenants. SeedSpot ([www.seedspot.org](http://www.seedspot.org)) will be calling the building home with a unique 4,000-square-foot space that includes polished concrete floors, exposed ceilings and an open workspace with a 360-degree view of Phoenix. CUUBE by [www.novawestllc.com/cuube](http://www.novawestllc.com/cuube) will occupy 7,100 square feet of the ground floor and mezzanine level with a new mobile office concept.

The building renovation will be completed summer 2013. We invite you to drop by for a tour.

For Leasing Information Contact: Mark Stratz with Cassidy Turley - 602.224.4427

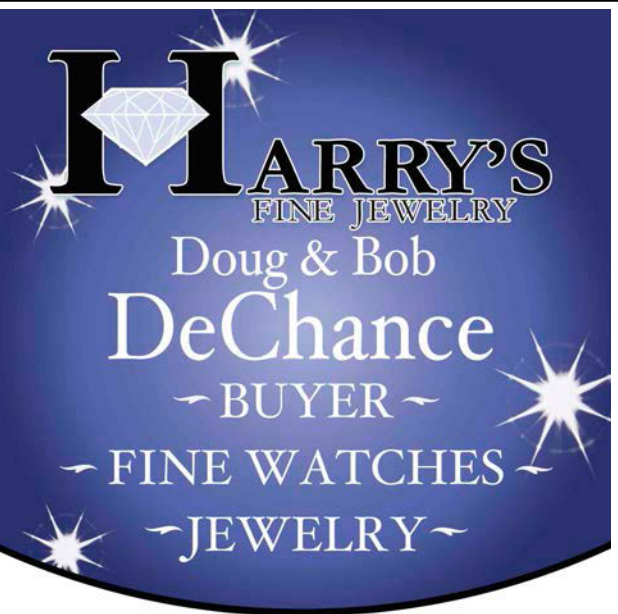


Central & Osborn  
602-279-0982  
[www.alexisgrillphx.com](http://www.alexisgrillphx.com)

Quality Food & Wine since 2001  
Eggplant Napoleon



[www.portlandsphoenix.com](http://www.portlandsphoenix.com)  
602.795.7480



2323 N. Central Ave.  
(REGENCY HOUSE)  
**602-252-5262**  
DIRECTLY ACROSS THE STREET

Phoenix Art Museum



Visit us at Central Avenue and McDowell Road in downtown Phoenix

PhxArt.org

# game on.

Princess, Pac-Man and Pong. This summer, you'll see a whole new side of art as your favorite video games invade Phoenix Art Museum. Explore 40 years of gaming, from 8-bit to PS3, Mario to Myst, while you discover the art of game design and how it has evolved to present day stardom.

And yes. We'll even let you play.

## The Art of Video Games

June 16 – September 29



Visit [TAOVG.org](http://TAOVG.org) for a complete listing of events.

*The Art of Video Games* exhibition is organized by The Smithsonian American Art Museum.

Exhibition sponsored by



Heather and Michael D. Greenbaum

Promotional support provided by



IMAGE: *Super Mario World*, 1991, Hiroshi Yamauchi, executive producer; Shigeru Miyamoto, producer; Takashi Tezuka, lead director. Nintendo of America, Inc.



**“Recognized.  
Respected.  
Recommended.”**

**Nicholas Yale.com**

(480) 620-8075 • [nicholasyale.com](http://nicholasyale.com)  
4700 N. Central Ave Suite 205 • Phoenix, AZ 85012



where the experts are™



Download the FREE mobile app at <http://gettag.mobi>