

MIDTOWNMUSE

Many Forms of Urban Living



in this issue:

Welcome to Midtown - The Urban Living Tour	1
Alvarado & Ashland Place Neighborhoods	1
Phoenix Theatre	1
St. Joseph's Hospital & Medical Center	2
Personal & Neighborhood Safety	3
Central United Methodist Church - History	3
Community Calendar	4-5
Deter Burglary & Theft Operation Identification	5
Local Farm Grown Produce in Midtown	6
Hance Dog Park Grand Opening	6
Transmission Flush	7

OCT
NOV
DEC

2013



www.midtownmuseumdistrict.org

Like Us on Facebook!

CENTER YOURSELF.
CONNECT WITH OTHERS.
TRANSFORM YOUR COMMUNITY.



CITY
SQUARE
C H U R C H

JOIN US SUNDAY MORNINGS AT 10AM

**DOWNTOWN – PHX CENTER FOR THE ARTS
1202 N. 3RD ST. PHOENIX, AZ 85004**



Open hearts. Open minds. Open doors.
The people of The United Methodist Church®

[f](#) CITYSQUARECHURCH | [e](#) CITYSQUAREPHX
CITYSQUARECHURCH.ORG

Welcome to Midtown

The Midtown Museum District Neighborhood Association is proud to announce the first Midtown Urban Living Tour on November 2nd from 3:00–7:00pm. The event will showcase homes in seven of Midtown's finest high-rise buildings and offer the rare opportunity for tour-goers to explore residences in: Executive Towers, One Lexington, Regency House, Tapestry on Central, Chateau on Central, Villa del Coronado and Artisan Lofts on Central.

The tour is designed for participants to get a true feel for urban living and each venue is conveniently located within walking distance of the light rail. Bike racks will be available at each location and pedicabs will be on-hand for easy, urban transportation.

Midtown Phoenix is home to a bustling business district, world-class museums and culture, fine restaurants, lush parks and a diverse mix of housing options. The Urban Living Tour will feature amazing homes and highlight why Midtown is the prime Valley destination to combine live, work and play. We will also include the new space at Phoenix Theatre and the historic Central United Methodist Church.

Executive Towers is an Al Beadle-designed high-rise featuring large homes with spacious terraces. It was the tallest skyscraper in Phoenix at the time of its construction in 1962-63.

One Lexington is a collection of loft-style condominiums with modern concrete-and-steel construction. Once the Century Bank office building, it is an excellent example of adaptive reuse.

Regency House is a 22-story luxury condominium building and was one of the first high-rise residential buildings constructed in Phoenix. Its cantilevered balconies provide spectacular views.

Tapestry on Central is a three-building, seven-story, high-rise offering two-story cityhomes, executive penthouses and expansive flats.

Chateau on Central offers a truly metropolitan vertical-living experience in the heart of Phoenix with its beautiful five-story brownstones. The Rosson House located in Historic Heritage Square inspired its architecture.

Villa del Coronado is one of the most sought after and unique co-op communities in Phoenix. Built in 1958, this wonderful example of Mid-Century Modern design was added to the National Register of Historic Places in 2009.

Artisan Lofts on Central was designed to feel like a renovated warehouse, with units that feature open floor plans and exposed ductwork and beams. The development was awarded Best in American Living Award (BALA) by the National Association of Home Builders in 2005.

Early ticket purchases can be made online for \$12 at www.urbanlivingtourphx.com. Day of tickets will be \$15. We will begin providing tour passes and programs at 2 PM at Park Central Mall on November 2nd. We encourage you to walk, bike or use light rail to get to the event. If you drive, you may park your vehicle at Park Central. Parking will not be available at the homes on the tour - please walk, bike, use light rail or a pedicab to travel from building to building.

Information: jason.mmdna@gmail.com. Please reference Midtown Urban Living Tour in the subject. 602-758-3129

The **MMDNA Board**: Dan Carroll, President; Susan Thompson, Vice-president; Jason Mazanek, Secretary; Paul Estes, Treasurer; Margaret Dietrich, Member-at-large. With Mike Oleskow, Julia Tourville and Louise Roman

For information about us or to advertise in the **MUSE** contact us at: info@midtownMUSEumdistrict.org or 602-758-3129 or *like us* on Facebook.

Alvarado and Ashland Place Neighborhoods

As you proceed along Central Avenue between McDowell and Thomas, you may be totally unaware that just a short block away on either side are beautiful, interesting and perhaps even quaint single family historic homes. The Willo neighborhood to the west is quite large, but to the east we have two smaller historic neighborhoods: Alvarado and Ashland Place.

Home of the internationally-known Heard museum, the **Alvarado** neighborhood's 30 homes typically feature Period Revival architectural styles including Spanish and American Colonial, Elizabethan/Tudor and Georgian. This historically rich and tree-laden neighborhood was originally referred to as Los Olivos. Olive trees as well as palms are focal points on the narrow streets. The center right photo on our cover is a home in Alvarado.

Alvarado Historic District is located along the intersection of Monte Vista and Alvarado Roads, extending north to Oak Street, east to Third Street and south toward Palm Lane.

Ashland Place's architecture is dominated by Bungalow and Period Revival styles. It was developed in the 1920s when visionary leader Dwight B. Heard's "Los Olivos" subdivision was re-subdivided to correspond with the busy time's demand for smaller lots. These homes were primarily constructed between 1920 and 1940. The bottom right photo on our cover is a home in Ashland Place.

Ashland Place Historic District is located along Hoover, Vernon and Ashland Avenues between Central Avenue and Third Street.

Phoenix Theatre By Tamara French

Phoenix Theatre is one of the oldest operating arts organizations in the country and the largest producing theatre in



Arizona. Ten years in the imagining, the Grand Opening of its new facility will reveal a 250-seat Black Box Theatre, soaring atrium lobby and expanded rehearsal and entertainment spaces. The Black Box Theatre will have its own "Off Broadway" style subscription series, and will be the new home to Phoenix Theatre's growing Theatre for Young Audiences and the cutting-edge Hormel New Works Festival.

The new space hosted a soft opening in September of *Ruthless! The Musical*. The Grand Opening Gala will be on October 26, an open house for the public on November 2, and later the off-Broadway smash hit *Tribes* and Tony Award-winning show *Avenue Q*.

Join us on Saturday, November 2nd from 3 until 7 p.m. and see Phoenix Theatre as you have never seen it before.

St. Joseph's Hospital and Medical Center

By Lisa Perez



St. Joseph's Hospital and Medical Center has received both local and national honors for its outstanding workplace environment. As a mission-drive organization, the hospital strives to foster a culture of collaboration, excellence, innovation and professional development. With nearly 5,000 employees, St. Joseph's is one of the Valley's largest employers. While the majority of its staff are nurses, physicians and other clinical professionals, the hospital team also includes researchers, administrative support, environmental services, hospitality and a wide range of other ancillary support service personnel.

St. Joseph's encourages work/life balance and has a strong employee wellness program that includes free fitness classes, nutrition consultations, health assessments, participation in the Virgin HealthMiles program and an on-site Farmers Market. A tuition assistance program encourages employees to pursue advanced education and training, and the hospital regularly hosts education sessions that focus on everything from health and wellbeing, to understanding government policies, to financial planning.



The hospital also hosts annual back-to-school and holiday drives for employees whose children may need assistance. It encourages employees to give back to the community by sponsoring community walks, events and health fairs and by hosting on-site food, shoe, Easter basket, and blood drives.



URBAN LIVING TOUR

HIGHRISES • DINING • CULTURE

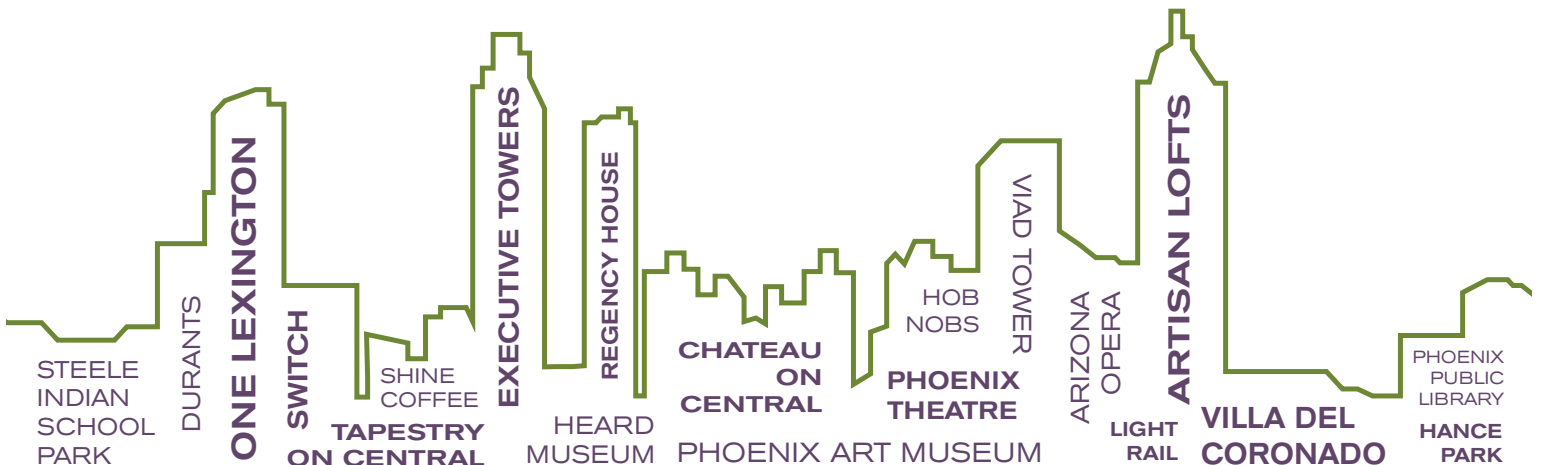
Sponsored by the Midtown Museum District Neighborhood Association

SATURDAY, NOVEMBER 2ND | 3:00 PM to 7:00 PM

The Urban Living Tour will showcase homes in seven celebrated communities. Join us for an adventure in Midtown high rise living.

PURCHASE TICKETS

www.URBANLIVINGTOURPHX.com • Park Central Mall day of event



Personal and Neighborhood Safety

By Officer Ben Harris

With the conclusion of the recent murder trial of a neighborhood watch volunteer in Florida, I'd like to write about questions that have been on the minds of many of you since that incident occurred. These questions range from carrying a firearm, citizens arrest, and what constitutes suspicious behavior. My answer has always been simple and admittedly very vague: "I want you to report suspicious activity to us, but please do not do anything to compromise your personal safety or integrity." You will note the lack of any legal advice in that statement, because I am not allowed to give it. What I can give you is specific information about suspicious behavior and actions, and some practical advice on personal safety.



Throughout the last year and a half, I have seen some fine examples of citizens observing crimes in progress. They did the right thing by remaining calm, following at a distance, and giving accurate information to 9-1-1. One citizen in particular helped patrol officers locate a bicycle thief, as well as his stash house. I have also seen citizens chase down criminals, and engage them physically in an attempt to catch them. This resulted in personal injuries, and opened them to personal liability.

One of the things we constantly train for as police officers is to stay calm and not get drawn into dangerous tactical situations. This parallels into many other legal issues for us, and should serve as a guide for you. Never let yourself get drawn into a situation where your safety or integrity may be compromised, just so you can catch a criminal.

There may be times when we observe people or events that draw suspicion. You need to be able to articulate the nature of your suspicion to the 9-1-1/non-emergency operator. We train to look for suspicious behavior, and we want you to do the same thing. There are some obvious activities like biking or walking through alleys. Then there are others that are much more subtle and require more time to gauge intent. Things like seeing a stranger riding down your street glancing around, or a strange vehicle parking in front of your house, or a neighbor's. These things are initially not too alarming, and may be innocent or benign. If we are careful to observe what goes on around us, we will have greater wisdom with how to respond.

When you call non-emergency or 9-1-1, never EVER let your adrenaline or emotions direct your actions. Instead, remember to breathe slow and think. What do the police need to accomplish their mission in this situation? A location, a license plate, a good physical description, details of the behavior you are witnessing. If 9-1-1 asks you a question, do not make assumptions or say "I think...". We need specific information, and it's OK to say I don't know or I can not see.

Do not think about response times, or the possibility the "bad guy" might get away. As police officers, we will do everything in our power to safely get to you. If you'd like to stay on the phone with the operator, tell them so. Please keep in mind, **we cannot hear what you do not say.**

If you would like more education on neighborhood safety, the City of Phoenix Police Department has an education program called Phoenix Neighborhood Patrol. This program educates residents on how to be a better witness, aspects of the 9-1-1 system, police patrol activities, confrontation avoidance, and personal liability. This training covers many of the specifics that this article cannot and I would highly encourage you attend, if you would like to be more proactive with your neighborhood's safety.

Stay vigilant!

**Ben Harris, Community Action Officer
Phoenix Police Department**

Funding for this article was provided by a Block Watch Grant provided by the City of Phoenix. Block Watch is a program to detect, deter and prevent crime.

Central United Methodist Church at N. Central Avenue and Palm Lane – History

Adapted from CUCM website

After the 1870 Los Angeles Annual Conference of the Methodist Episcopal Church South, a lone circuit rider headed east across the hot and barren Mohave Desert, and on into the Sonoran Desert ... his destination, the few isolated settlements that dotted the vast Arizona Territory.

One hundred and forty three years later we look back with gratitude for the courage, vision, and faith of that lonely rider, Alexander Groves, and the small but hardy group of men and women who welcomed him to their humble community on the banks of the Salt River in the middle of the desert. That fledgling group began gathering regularly for worship under the spiritual leadership of Rev. Groves, and was the inception of what we now know as Central United Methodist Church.

In the beginning, they gathered for worship on the banks of the Salt River under a grove of Mesquite trees, and "classes" were formed. By the turn of the century, Central had become a major religious force in the growing community of Phoenix. Over the intervening years, the congregation continued to grow and moved locations several times. In 1946, the congregation purchased 4 1/2 acres on the outskirts of Phoenix at Central and Palm Lanes for \$44,900. The present mission style structure was dedicated in 1950.

Not only was Central the first Protestant Church in Phoenix, it was one of the first two Methodist Churches in Arizona. Central Church has often been called the Mother of Arizona Methodism. The ministries of Central Church have been greatly multiplied by its assistance in starting other Methodist Congregations throughout the Valley, Arizona, and around the world.

COMMUNITYCALENDAR

Arts & Culture

ASU Osher Lifelong Learning Institute

602-543-6440 www.lifelonglearning.asu.edu
many short series and single classes for the 50+ group

Actors Theatre at Playhouse on the Park (Viad)

602-888-0368 www.actorstheatrephx.org
10-25-11/10 A Steady Rain

Arizona Humanities Council

602-257-0335 www.azhumanities.org
many interesting lectures around the state

Arizona Opera at Symphony Hall

602-266-7464 www.azopera.org
10/11-13 H.M.S. Pinafore
11/15-17 The Flying Dutchman

Arizona Theatre Company at the Herberger Theater

602-256-6995 www.arizonatheatre.org
10/10-27 The Importance of Being Earnest
11/14-12/1 The Mountaintop
12/31-1/19 Xanadu

Burton Barr Public Library - 1221 N Central Ave

602-534-5208 www.plfriends.org
10/26-27 & 11/23 Warehouse book sales
602-262-4636 www.phoenixpubliclibrary.org
10/19-11/24 Guantanamo Public Memory Project
too many events to list - see website

Cutler-Plotkin Jewish Heritage Center - 122 E Culver

602-241-7870 www.azjhs.org
10/13 A Celebration of Music & Philanthropy-Orpheum
Book discussions, films, forums, more - see website

Great AZ Puppet Theater 302 W Latham

602-262-2050 www.azpuppets.org
10/9-31 Little Bunny's Halloween
11/1-3 Goldilocks
11/6-10 Imagine This!
11/13-12/1 The Little Red Hen
12/4-22 The Elves & The Shoemaker
12/26-1/26 Cinderella

Heard Museum 2301 N Central Ave

602-252-8840 www.heard.org
10/13-1/5 Latino Folk Tales
11/2 Navajo Weavers Marketplace
11/28-12/1 4th Annual Ornament Marketplace
12/26-31 Holidays at the Heard

Irish Cultural Center 1106 N Central

602-258-0109 www.azirish.org
classes and events

Japanese Friendship Garden 1125 N 3rd Ave

602-256-3204 www.japanesefriendshipgarden.org
10/19 Otsukimi Moonviewing

Phoenix Art Museum Central and McDowell

602-257-1222 www.phxart.org
until 1/12 Rufino Tamayo: Master Printmaker
10/2-12/31 Xul Solar & Jorge Luis Borges The Art of Friendship
11/10-12/31 The West Select

Phoenix Center for the Arts 1202 N 3rd St

602-254-3100 www.phoenixcenterforthearts.org
many forms of art classes for children and adults

Phoenix Chorale

602-253-2224 www.phoenixchorale.org
10/26 Amazing Grace Central United Methodist Church
12/19-20 A Chorale Christmas Brophy Chapel

Phoenix Symphony at Symphony Hall

602-495-1999 www.phoenixsymphony.org
too many performances to list - see website

Phoenix Theatre 100 E McDowell

602-254-2151 www.phoenixtheatre.com
until 10/13 Ruthless
10/2-20 The 39 Steps
11/20-12/24 White Christmas

Valley Youth Theatre

602-253-8188 www.vyt.com
10/18-11/3 The Princess and The Pea
12/6-23 A Winnie-the-Pooh Christmas Tail

Nightlife/Happy Hours

Alexi's Grill -BBQ Fridays - 3550 N Central Ave

602-279-0982 www.alexisgrillphx.com

Clarendon Hotel Skydeck - 401 W Clarendon Ave

602-252-7363 www.theclarendon.net/roof

Fez - Daily Happy Hour - 3815 N Central Ave

602-279-0982 www.fezoncentral.com

Kobalt - Daily events - Park Central

602-264-5307 www.kobaltbarphoenix.com

Macayo's - Daily Happy Hour - 4001 N Central Ave

602-264-6141 www.macayo.com

Sochu House - Happy Hour M-F 3-6pm & 10:30-1am

2801 N Central 602-340-9777 www.sochuhouse.com

Switch - Daily Happy Hour - 2603 N Central Ave

602-264-2295 www.switchofarizona.com

Home Tours and Events

First and Third Fridays

information www.artlinkphoenix.com

St. Joseph's Hospital Farmers Market front entrance circle

fruits, vegetables, baked goods, gifts
Fridays 10/18, 11/1, 11/15, 12/13 Christmas Boutique (see next page)

Phoenix Oktoberfest at Hance Park
10/5 \$5 noon-9pm www.phoenixoktoberfest.com

Hance Dog Park Grand Opening
10/5 8-10am between 3rd & 5th on Culver

Cruise on Central at Park Central Mall
10/12 1-8pm free

Be A Leader Foundation Walkathon at Hance Park
10/14 9am-3pm www.expectmorearizona.org

Music & Movies in the Square
Central United Methodist Church
10/18 food trucks 6pm, movie 7:00pm free

Grand Avenue Festival
10/19 11am-8pm www.grandavephoenix.com

Rainbow Festival at Heritage Square Park
10/19-20 www.phoenix-pride.us

Phoenix Walk for Farm Animals at Hance Park
10/26 10am-2pm www.walkforfarmanimals.org

Taste of the Trucks on Roosevelt Row
10/26-27 www.rooseveltrow.org

Midtown Urban Living Tour - 1st Annual
11/2 3-7pm starts at Park Central
602-758-3129 www.urbanlivingtourphx.com

38th Annual 3TV Phoenix 10K & Half Marathon
11/3 www.phx10k.com start/end City Scape Plaza

9th Annual Certified Local Fall Festival
Saturday 11/9 10am-4pm Portland Parkway
sponsored by **Local First Arizona**

Historic Roosevelt TourFest 11am-4pm
11/9 Portland Pkwy-west end - home tour sign-in
www.rooseveltneighborhood.org

Artlink Collectors Tour 1:00pm-4pm
11/16 tour leaves from Phoenix Art Museum
<https://artlinkcollectorstournovember2013.eventbrite.com/>

Pie Social on Roosevelt Row
11/16 bring two pies or \$10 www.rooseveltrow.org

Cook Phoenix at Hance Park-east side
11/16 noon-4pm \$25 www.hrc.org/cookphoenix

F.Q. Story Home Tour & Gift Sale
12/7 6-9pm 12/8 11-5 www.fqstory.org

Midtown Museum District Neighborhood Assn
12/11 Annual meeting/election of officers 6:30
602-758-3129 www.midtownmuseumdistrict.org

Phoenix Festival of the Arts at Hance Park
12/13-15 www.phoenixfestivalofthearts.org

Rock 'n' Roll Marathon
1/19 <http://runrocknroll.competitor.com/arizona>

Deter Burglary and Theft with Operation Identification

Operation Identification (Operation ID) is a citizen's burglary prevention program for use in homes and businesses. The program involves marking property with an identifying number as a means of discouraging burglary and theft. Marked property is difficult for a burglar to dispose of—it can be traced to the rightful owner with relative ease. If a burglar is caught with marked property, it is solid evidence of possession of stolen goods and provides police with a way to identify property should it be recovered.

Marking your property

Engrave items that are portable, easily stolen, and readily saleable. In general, electronics are always high on a thief's list. Engrave or mark your valuables with your driver's license number (or any number that is of importance to you) so your property can be easily traced and identified as yours. Engrave as follows: AZ##### 12 (*year of expiration*) Please note—if your driver's license number is your Social Security Number, we strongly recommend you **DO NOT USE YOUR SS.**

Engrave in two locations: 1) one that can easily be seen, and 2) one that cannot easily be seen. *Items Not to Engrave:* Photograph but do not engrave items that will decrease in value if they are engraved or otherwise marked. This includes, but is not limited to, items such as silverware, coins, furs, antiques, china, watches, jewelry, collectibles, artwork, and rare or irreplaceable items. Jewelry should be photographed with an ID card and ruler next to it to show ownership and size.

Make a home inventory

After marking your property, make a list of your valuables, and keep a copy of the list in a safe place. If you should become a burglary victim, you will be able to quickly describe the stolen property from the list. This will be of great help to police in their attempts to recover stolen possessions. Your Household Inventory Record should be updated every year.

Article written using information provided by Phoenix Block Watch Advisory Board & the Phoenix Police Department.

Funding for this article was provided by a Block Watch Grant provided by the City of Phoenix.

Local Farm Grown Produce in Midtown!



Community Supported Agriculture (CSA) is a form of an alternative food network. A **CSA** consists of a community of individuals who pledge support to a farming operation where the growers and consumers share

the risks and benefits of food production. **CSAs** usually consist of a system of weekly delivery or pick-up of vegetables and fruit at a designated place.

To participate you sign a contract for a period of time – like ten weeks – and pay an upfront fee. Then each week you go to the pick-up place and get a selection of the produce available. Each pick-up place handles the method of allocation slightly differently but you should expect to get about eight different fruits and vegetables.

We now have two pick-up points in Midtown and a Farmers Market at St. Joseph’s Hospital:

Chow Locally will deliver local farm-fresh fruits and vegetables for Saturday pick-up between 8:30 and 10:30am at Shine Coffee, 10 W Vernon Ave. A flexible weekly subscription is \$23.97 each week. To sign up or learn more, visit www.chowlocally.com.

Duncan Family Farms - Salad A Day CSA program:

Usually harvesting begins in late October or early November, hence the date of delivery is determined by readiness of the lettuces and veggies. Online Orders/ Payment (weekly or biweekly) New registrations www.duncanfamilyfarmslocal.com Delivery truck location: St Joseph Hospital Parking Lot 8 (J Lot) Wednesday 7:30-8:30 am & Thursday 4:15-5:30 pm

Enjoy shopping at **St Joseph’s Hospital, Farmers Market**. Meet amazing vendors and purchase your fresh fruits and vegetables, salsa, olives, sauces, Greek olive oils, peanut butter, baked goods, artisan breads, honey, cake pops, granolas, jewelry, soaps, purses and much, much more. Location- Front hospital entrance near circle drive Fridays Oct 18; Nov 1 & 15; Dec 13-*Christmas Boutique*; Jan 10 & 24; Feb 7 & 21; March 7 & 21; April 4 & 18; May 2 - 8:00-12:30.



Hance Dog Park is Finally Opening on October 5th

Come celebrate! While construction is scheduled to be completed in late-September, the park itself won't be ready until October 5 as we wait for the grass to grow. At the Grand Opening from 8-10am there will be a ribbon cutting ceremony, local doggie businesses and dog agility performances, plus information about how you can join Friends of Hance Dog Park.



COFFEE & ICE CREAM

Now with
Maple Bacon
Ice Cream!

Bring this ad in
for **20% off**
your purchase

Monday - Friday 7am - 10pm
Saturday - Sunday 8am - 10pm

49 W Thomas Rd
Phoenix, AZ
602 - 265 - 3889

If you prefer fresh veggies,
our dirt is better than their dirt.



zpizza | thepureone™
zpizza.com

downtown phoenix midtown phoenix
111 w. monroe st., (602) 254-4145 53 w. thomas rd., (602) 234-3289

\$5 off your order of \$25 or more with this ad

one per customer per visit. not to be combined with other offers. no photocopies.

TOYOWEST
AUTOMOTIVE, INC.

3831 N. CENTRAL
PHOENIX, AZ 85012
602.274.3600
TOYOWEST.com

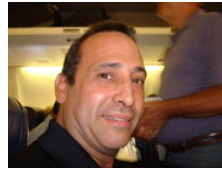


LEXUS TOYOTA
CAR CARE SPECIALISTS

DEBBIE & ROGER CAHILL

Transmission Flush

By Roger Cahill



Not that long ago removing ALL the old fluid in a vehicle's automatic transmission was considered tedious, time consuming, and wasteful. One way was to drain and refill the fluid and then take a short drive to let it all mix together. This process was

repeated until all the fluid became clean, which typically took 4-5 cycles. Another way was to replace the transmission fluid only when the transmission was being repaired or replaced. This was time consuming, tedious **and** costly.

We know from experience that the number one cause of transmission failure is old, depleted fluid. In fact, studies have shown that over 90% of all transmissions that needed to be rebuilt or replaced were because of old dirty fluid that was left in the transmission too long, leading to transmission failure.

Transmission fluid is the life blood of the transmission. Fluid can turn color and begin to oxidize as early as 30,000 miles from normal operation. Fluid oxidation causes the fluid to overheat and turn color, inevitably affecting transmission operation regardless of what type of fluid is used.

Flushing the transmission prolongs transmission life by removing 100% of the old depleted fluid. This service, done correctly, removes harmful contaminants suspended in the fluid during normal wear and tear. In the long run flushing will ensure long trouble free operation.

Corporate & Business Law
Corporations & LLCs
Copyrights
Trademarks
Internet & E-commerce Law
Arts & Entertainment Law
Website Law
Digital Assets & Property
Start-Ups & IP

Connie J. Mableson, Esq.

Mableson Law Group—Midtown
3033 N. Central Avenue
Suite 645
Phoenix, Arizona 85012
602-277-8100
connie@mablesonlaw.com
www.mablesonlaw.com

The Best Cleaners

29 W Thomas Road
Phoenix 85013-4418
602-253-5312

*Specializing in wedding gowns,
leather, down comforters
and alterations*

**Pizza Doesn't Have to
Be Ordinary!**

Hob Nobs

Sandwiches • Pizzas • Salads
Dessert • Espresso • 40 Unique Beers
Boutique Wine & Spirits
Art Gallery • Live Music

149 W. McDowell Rd • 602.253.9220
Hob-Nobs.com • Additional Parking Across 3rd Ave





COMMUNITY OPEN HOUSE 30th Anniversary Celebration

Saturday, October 19, 8:30 AM - 3:30 PM
3232 North 20th Street | Phoenix, AZ 85016

You are invited to experience your new neighborhood retreat. Desert Song's new home, a 1950s former electrical union hall, has been transformed into a holistic sanctuary for health. Our vision is to *Change Lives*, and we have been doing that in the Valley for 30 years! Join us for a day to celebrate our anniversary and your new, beautiful community space.

- FREE classes for the whole family
- Massages
- Kids music with *Music Together*
- Art projects with *Free Arts for Abused Children of Arizona*
- Snacks provided by our new neighborhood partner *Whole Foods*
- Live music in the garden

A Variety of FREE Classes for the Whole Family

8:30 - 10:00 - Gentle Yoga Yoga for All Levels Intermediate Flow	12:00 - 1:00 - Prenatal Partners Yoga Basics
10:15 - 11:40 - Prenatal Yoga Parent & Young Child Yoga for All Levels	1:15 - 2:15 - Meditation & Restorative Kids Yoga Partners Yoga
11:15 - 12:00 - Mommy & Me Music Together	2:30 - 3:30 - Tai Chi Teens Yoga Yoga for All Levels

EVENT PARTNERS:



Gregory Real Estate & Mgmt. LLC

**Ann Gregory,
Designated Broker**

602-989-3411

Member of PAR, NAR & NARPM

Licensed in AZ & NM

www.RentsPHX.com

Info@RentsPHX.com



MULTIPLE LISTING SERVICE
MLS

Need Property Management?

Your Rents Phoenix Management Team is here for you!

Located: 1515 W. Osborn

- Flat Fee Management
- 11 Years Managing in Phoenix
- 24 Hours on Call
- No Maintenance Up Charge
- Spanish Available
- Valley-Wide Management



Holiday Inn
Phoenix
Downtown North

212 W. Osborn Road - Phoenix, AZ 85013
Phone: 602-595-4444
www.HolidayInn.com/phx-downtown

AMENITIES

- 136 rooms & suites
- Restaurant & lounge
- Business center
- Fitness center
- Pool & spa
- Free Internet access
- Priority Club Rewards
- Special group rates
- One block from Light Rail

HARRY'S
FINE JEWELRY
Doug & Bob
DeChance
BUYER
FINE WATCHES
JEWELRY

**2323 N. Central Ave.
(REGENCY HOUSE)**

602-252-5262

DIRECTLY ACROSS THE STREET

Sports Club at CITY-SQUARE

Your Uptown Fitness Experience!

- Yoga, Zumba, Nia, and Pilates
- Premium weight training and cardio equipment
- A clean, pleasant atmosphere
- Limited Membership (900 members, age 18+)
- Indoor Basketball/Volleyball Court
- Six racquetball courts
- Members only outdoor pool
- Massage Therapy
- Staff Trainers
- Free Parking

Special Offer for New Members*

\$99 for 3 months

**Limited to first-time guests, 18 or over, with valid photo I.D.*



4000 North Central Avenue, Suite 110 • Phoenix, AZ
(602) 285-2929 • www.sportsclubatcitysquare.com

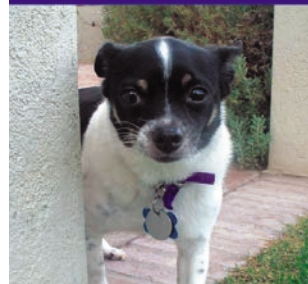
Alexi's

GRILL & CATERING

3550 North Central Avenue Suite 120
Phoenix, Arizona 85012
Tel: (602) 279-0982 Fax: (602) 279-0984
www.alexisgrillphx.com

Just Around the Corner

Professional Pet Sitting & Home Services



Theresa Smith

(602) 301-1373

justaroundthecorner@cox.net

www.jatcpetsit.com

Bonded & Insured



Royal Wood Flooring LLC

Licensed - Bonded - Insured - ROC#281921

602-446-2613

Over 15 years of professional experience

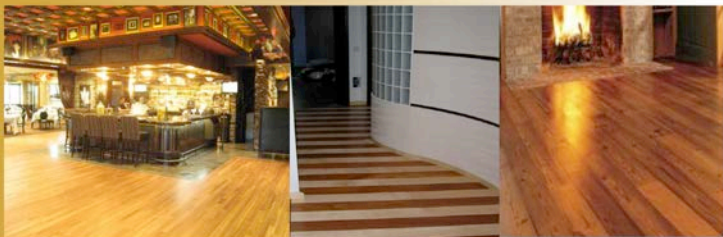
High Quality Workmanship

Honest & Reliable Contractors

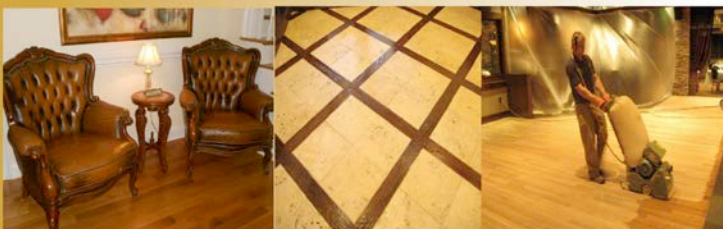
Best Wood Flooring Services in the Valley

Installation - Dustless Sanding - Refinishing - Buffing Re-coat - Repairs

www.royalwoodflooring.com



BEAUTIFUL HOMES DESERVE BEAUTIFUL WOOD FLOORS



*My passion is selling historic homes and
urban lofts in the heart of Phoenix,
and I can sell yours!*



Bobbi Ryals, Realtor®

602-486-3587

downtownphoenixagent.com

downtownphoenixagent@gmail.com



Welcoming Our Neighbors

Affordable chiropractic now in your neighborhood

The Joint provides affordable chiropractic care to address nearly all your health needs. We're even open nights and weekends, making ongoing care convenient. We'll have you feeling your best and get you back to center in no time at all.

\$19 | adjustment*

No Appointments
Convenient Hours
Licensed Chiropractors

7th Ave & McDowell

S/E Corner of 7th Ave. & McDowell Ave.
1515 N. 7th Ave.
(602) 714-7664

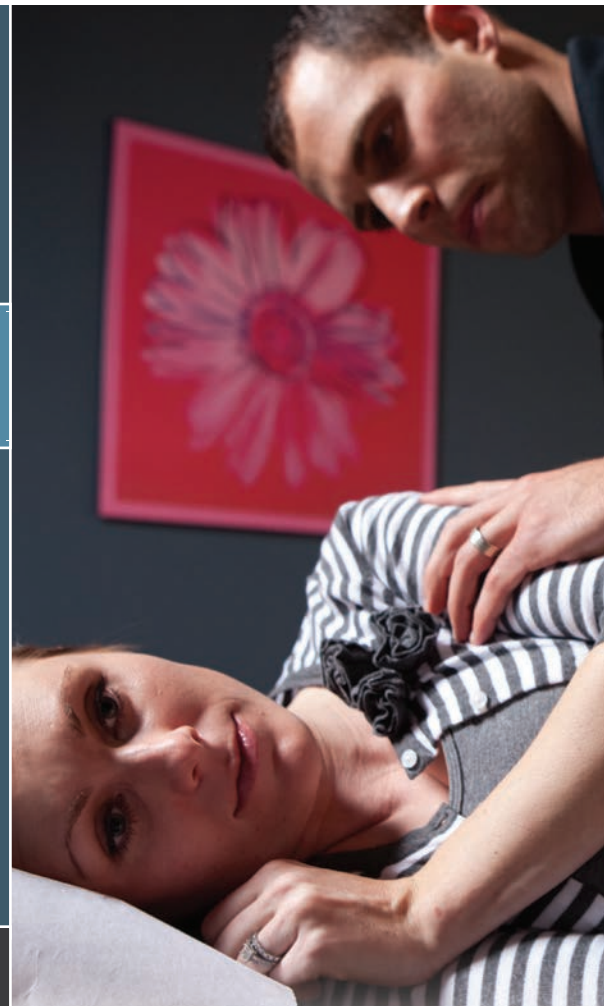
Monday - Friday: 10:00AM - 7:00PM
Saturday: 10:00AM - 4:00PM
Sunday: 9:00AM - 2:00PM

Walk-Ins Welcome

THE JOINT
...the chiropractic place®

Find and Like us at
[Facebook.com/thejointchiro](https://www.facebook.com/thejointchiro) :: thejoint.com :: Franchises Available

*Offer valid for first visit only. Initial visit includes consultation, exam and adjustment.
Please present offer at time of redemption. © 2013 The Joint Corp



*“Recognized.
Respected.
Recommended.”*

Nicholas Yale.com

(480) 620-8075 • nicholasyale.com
4700 N. Central Ave Suite 205 • Phoenix, AZ 85012

REALTY EXECUTIVES INTERNATIONAL
where the experts are™



Download the FREE mobile app at
<http://gettag.mobi>

